



Name \_\_\_\_\_ Class \_\_\_\_\_ Date \_\_\_\_\_

1 A(n) \_\_\_\_\_ is the **earth moving in a path around the sun**, which results in one year on earth.

- A trail
- B revolution
- C rotation
- D axis



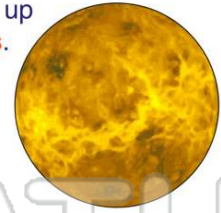
3 What keeps the **earth revolving around the sun**?

- A stars
- B wind
- C gravity
- D oxygen



2 \_\_\_\_\_ is a very **hot and rocky planet** with no moons; its atmosphere is made up of **poisonous gases**.

- A Mars
- B Earth
- C Venus
- D Uranus



4 The **path that the earth follows** as it revolves around the sun is called its \_\_\_\_\_.

- A orbit
- B axis
- C revolution



5



## PREVIEW

Please [Sign In](#) or [Sign Up](#) to download the printable version of this worksheet

7

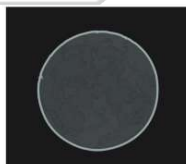
- B Pluto
- C the Moon
- D the Sun



- A the same side of the moon always faces the earth
- B all sides of the moon face earth
- C the moon is not visible from earth
- D the same side of earth faces the moon

9 When the moon is between the earth and the sun, the moon **looks dark**. This **phase** is called the \_\_\_\_\_, which begins a new set of moon phases.

- A half moon
- B full moon
- C new moon
- D crescent moon



10 **After the new moon**, the moon begins to show in its \_\_\_\_\_ phase. The moon looks like a **sliver in the sky** during this phase.

- A new moon
- B waxing crescent
- C half moon
- D full moon





## ANSWER KEY

A(n) \_\_\_\_\_ is the **earth moving in a path around the sun**, which results in one year on earth.

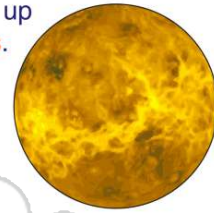
- A trail
- B revolution
- C rotation
- D axis



(b)

\_\_\_\_\_ is a very **hot and rocky planet** with no moons; its atmosphere is made up of **poisonous gases**.

- A Mars
- B Earth
- C Venus
- D Uranus



(c)

What keeps the **earth revolving around the sun**?

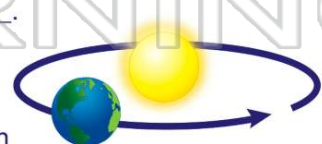
- A stars
- B wind
- C gravity
- D oxygen



(c)

The **path that the earth follows** as it revolves around the sun is called its \_\_\_\_\_.

- A orbit
- B axis
- C revolution
- D rotation



(a)



## PREVIEW

Please [Sign In](#) or [Sign Up](#) to download the printable version of this worksheet

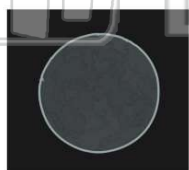
- C the moon
- D the Sun



- B all sides of the moon face earth
- C the moon is not visible from earth
- D the same side of earth faces the moon

When the moon is between the earth and the sun, the moon **looks dark**. This **phase** is called the \_\_\_\_\_, which begins a new set of moon phases.

- A half moon
- B full moon
- C new moon
- D crescent moon



(c)

After the **new moon**, the moon begins to show in its \_\_\_\_\_ phase. The moon looks like a **sliver in the sky** during this phase.

- A new moon
- B waxing crescent
- C half moon
- D full moon



(b)