



Name \_\_\_\_\_ Class \_\_\_\_\_ Date \_\_\_\_\_

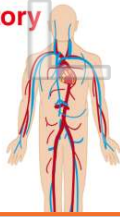
- 1 Which **organ system** enables vertebrates to **reproduce**?
- A endocrine system
  - B nervous system
  - C circulatory system
  - D reproductive system



- 2 The \_\_\_\_\_ system of a vertebrate animal enables it to **send, receive, and process signals** from the body to the brain and from the brain to the body.
- A nervous
  - B circulatory
  - C endocrine
  - D muscular



- 3 What is the role of the **circulatory system** in an animal's body?
- A to send carbon dioxide to cells
  - B to transport blood
  - C to breathe oxygen in and



- 4 How are humans and other animals **similar** in regards to their **respiratory systems**?
- A both breath out nitrogen
  - B both breath out oxygen



## PREVIEW

Please [Sign In](#) or [Sign Up](#) to download the printable version of this worksheet

- 7
- A carbon dioxide
  - B oxygen
  - C flavor
  - D energy



- A stores food for the animal
- B keeps the animal's insides from drying out
- C supplies the animal with oxygen
- D takes in nitrogen for the animal



- 9 The illustration shows that **animals** have the ability to \_\_\_\_\_ in their environment, an ability that **plants do not** have.
- A move
  - B grow
  - C dig
  - D take in air



- 10 What would be a **benefit** of an animal being able to **run quickly**?
- A to reduce heart rate
  - B to take in oxygen slowly
  - C to escape predators
  - D to use up energy





## ANSWER KEY

Which **organ system** enables vertebrates to **reproduce**?

- A endocrine system
- B nervous system
- C circulatory system
- D reproductive system



(d)

The \_\_\_\_\_ system of a vertebrate animal enables it to **send, receive, and process signals** from the body to the brain and from the brain to the body.

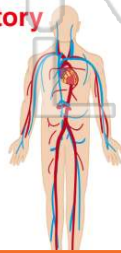
- A nervous
- B circulatory
- C endocrine
- D muscular



(a)

What is the role of the **circulatory system** in an animal's body?

- A to send carbon dioxide to cells
- B to transport blood
- C to breathe oxygen in, and carbon dioxide out
- D to transport oxygen to cells



(b)

How are humans and other animals **similar** in regards to their **respiratory systems**?

- A both breath out nitrogen
- B both breath out oxygen
- C both need to take in oxygen
- D both need to take in nitrogen



(c)



## PREVIEW

Please [Sign In](#) or [Sign Up](#) to download the printable version of this worksheet

- A carbon dioxide
- B oxygen
- C flavor
- D energy



- A dries out
- B supplies the animal with oxygen
- C supplies the animal with nitrogen
- D takes in nitrogen for the animal



The illustration shows that **animals** have the ability to \_\_\_\_\_ in their environment, an ability that **plants do not** have.

- A move
- B grow
- C dig
- D take in air



(a)

What would be a **benefit** of an animal being able to **run quickly**?

- A to reduce heart rate
- B to take in oxygen slowly
- C to escape predators
- D to use up energy



(c)