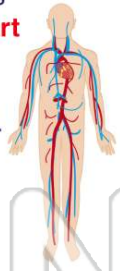




Name _____ Class _____ Date _____


1 The **circulatory system** pumps blood in two loops from the **heart to the lungs**, then back to the heart. This blood is pumped **to the body**, then back to the heart.



True or false?

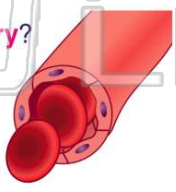
A true
B false

2 **Arteries** and **veins** are similar since they both carry blood inside your body. **How are arteries and veins different?**




A veins are not made of blood vessels, arteries are
B arteries carry blood to heart, veins do not
C arteries have thinner walls than veins
D veins have valves, arteries do not

3 Which is true of a **capillary**?



A it is the smallest type of blood vessel
B it is the largest type of blood vessel

4 Your **nose, trachea, lungs, and diaphragm** make up your **respiratory system**, which is the system in charge of



A pumping blood through your body
B taking oxygen in and releasing carbon dioxide out of the body
C breaking down and processing

5



PREVIEW

Please [Sign In](#) or [Sign Up](#) to download the printable version of this worksheet

6

A excretory
B circulatory
C respiratory
D digestive

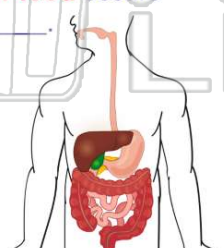


7

A bronchi
B esophagus
C sinus passages
D trachea

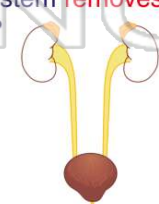


9 The **digestion of your food** occurs mostly in your _____.



A large intestines
B small intestines
C stomach
D esophagus

10 Your **urinary system** rids your body of waste that can poison your body. Which **organ** of the urinary system **removes waste from your blood?**

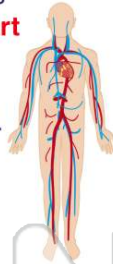


A kidneys
B heart
C pancreas
D liver



ANSWER KEY

The **circulatory system** pumps blood in two loops from the **heart to the lungs**, then back to the heart. This blood is pumped **to the body**, then back to the heart.



(a)

True or false?

- A true
- B false

Arteries and **veins** are similar since they both carry blood inside your body. **How are arteries and veins different?**



(d)

- A veins are not made of blood vessels, arteries are
- B arteries carry blood to heart, veins do not
- C arteries have thinner walls than veins
- D veins have valves, arteries do not

Which is true of a **capillary**?



(a)

- A it is the smallest type of blood vessel
- B it is the largest type of blood vessel
- C it is the longest type of blood vessel
- D it is the widest type of blood vessel

Your **nose, trachea, lungs, and diaphragm** make up your **respiratory system**, which is the system in charge of _____.



(b)

- A pumping blood through your body
- B taking oxygen in and releasing carbon dioxide out of the body
- C breaking down and processing food to gather nutrients



PREVIEW

Please [Sign In](#) or [Sign Up](#) to download the printable version of this worksheet

- B circulatory
- C respiratory
- D digestive

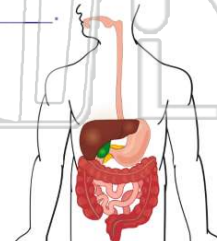


- A bronchi
- B esophagus
- C sinus passages
- D trachea



The **digestion of your food** occurs mostly in your _____.

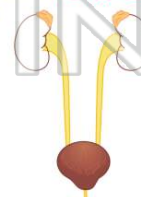
- A large intestines
- B small intestines
- C stomach
- D esophagus



(b)

Your **urinary system** rids your body of waste that can poison your body. Which **organ** of the urinary system **removes waste from your blood?**

- A kidneys
- B heart
- C pancreas
- D liver



(a)