



Name _____ Class _____ Date _____

1 A(n) _____ is when matter undergoes a change that **does not** result in the formation of a **completely new substance** with different properties.

- A physical change
- B chemical change
- C permanent change
- D irreversible change



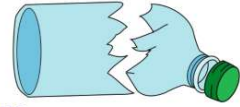
3 After a **physical change**, the substance or object involved _____.

- A is the same shape
- B is chemically different, but looks the same
- C looks different, but is



2 What does a **physical change** involve?

- A an object's chemical properties
- B an object's size, shape, or its state
- C no properties of the object
- D the elements the object is made of



4 **Cutting paper** is a **physical change** because the paper _____.

- A can never be paper again
- B has changed its chemical properties



PREVIEW

Please [Sign In](#) or [Sign Up](#) to download the printable version of this worksheet

7

B dead leaves turning into compost

C burning leaves

D all of the above



- B chemical
- C permanent
- D irreversible



9 Which of the following is an example of a **physical change**?

- A steel swing set rusting
- B a log burning
- C butter being melted
- D waffle burning in a toaster



10 These are possible **signs** that _____.

- change of shape
- change of state (solid, liquid, or gas)
- change in size

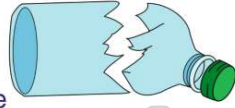
- A no change has occurred
- B an irreversible has occurred
- C a chemical change has occurred
- D a physical change has occurred



ANSWER KEY

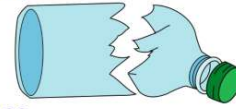
A(n) _____ is when matter undergoes a change that **does not** result in the formation of a **completely new substance** with different properties.

- A physical change
- B chemical change
- C permanent change
- D irreversible change



(a)

What does a **physical change** involve?



- A an object's chemical properties
- B an object's size, shape, or its state
- C no properties of the object
- D the elements the object is made of

(b)

After a **physical change**, the substance or object involved _____.

- A is the same shape
- B is chemically different, but looks the same
- C looks different, but is chemically the same



(c)

Cutting paper is a **physical change** because the paper _____.

- A can never be paper again
- B has changed its chemical properties
- C can be burned



(d)

E

V

O

A

E

C

E

V

P

A

E



PREVIEW

Please [Sign In](#) or [Sign Up](#) to download the printable version of this worksheet

- into compost
- C burning leaves
- D all of the above

- C permanent
- D irreversible



Which of the following is an example of a **physical change**?

- A steel swing set rusting
- B a log burning
- C butter being melted
- D waffle burning in a toaster



(c)

These are possible **signs** that _____.

- change of shape
- change of state (solid, liquid, or gas)
- change in size

- A no change has occurred
- B an irreversible has occurred
- C a chemical change has occurred
- D a physical change has occurred

(d)