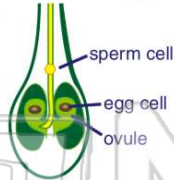




Name _____ Class _____ Date _____

1 When an egg cell is **fertilized**, the _____ from the **pollen** combines with the DNA information of the **egg cell** and a seed is created.

- A gas
- B nectar
- C DNA information
- D chloroplasts



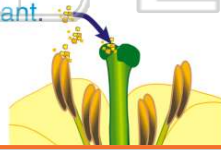
2 _____ is the **transfer of pollen** from the anther of one flower to the stigma of **another flower**.

- A Germination
- B Transpiration
- C Self-pollination
- D Cross-pollination



3 _____ is the **transfer of pollen** from anther to stigma on the **same flower** or the **same plant**.

- A Germination
- B Transpiration
- C Self-pollination
- D



4 What is the **job of a seed coat** on a seed?

- A to protect the seed
- B to feed the seed
- C to take in oxygen
- D to make the seed grow



PREVIEW

Please [Sign In](#) or [Sign Up](#) to download the printable version of this worksheet

7 _____
S
th
o
th
s

A dispersed
B eaten
C germinated
D pollinated



- A Ants
- B Rocks
- C Animals
- D Trees



9 A bird eats the seeds from a fruit. The seeds pass through the bird's **digestive system**. When the bird's body gets rid of the seeds through its **waste**, the seeds will _____

- A shrivel up
- B be dispersed in a new area
- C never germinate
- D pollinate other plants



10 When the conditions are just right, a seed will **germinate**. Roots and the stem will grow out from the seed. **Which of the following conditions are just right for germination?**

- A extremely wet
- B very hot
- C very cold
- D none of the above

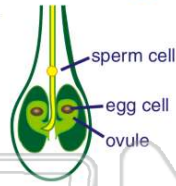




ANSWER KEY

When an egg cell is **fertilized**, the _____ from the **pollen** combines with the DNA information of the **egg cell** and a seed is created.

- A gas
- B nectar
- C DNA information
- D chloroplasts



(C)

_____ is the **transfer of pollen** from the anther of one flower to the stigma of **another flower**.

- A Germination
- B Transpiration
- C Self-pollination
- D Cross-pollination



(d)

_____ is the **transfer of pollen** from anther to stigma on the **same flower** or the **same plant**.

- A Germination
- B Transpiration
- C Self-pollination
- D Cross-pollination



(C)

What is the **job of a seed coat** on a seed?

- A to protect the seed
- B to feed the seed
- C to take in oxygen
- D to make the seed grow



(a)

A
A
E
C
E



PREVIEW

S
th
o
th
s

Please [Sign In](#) or [Sign Up](#) to download the printable version of this worksheet

- A dispersed
- B eaten
- C germinated
- D pollinated



- B ROCKS
- C Animals
- D Trees



A bird eats the seeds from a fruit. The seeds pass through the bird's **digestive system**. When the bird's body gets rid of the seeds through its **waste**, the seeds will _____.

- A shrivel up
- B be dispersed in a new area
- C never germinate
- D pollinate other plants



(b)

When the conditions are just right, a seed will **germinate**. Roots and the stem will grow out from the seed. **Which of the following conditions are just right for germination?**

- A extremely wet
- B very hot
- C very cold
- D none of the above



(d)