



Name _____ Class _____ Date _____


1 Which is a **characteristic** of **birds**?

- A three chambered heart
- B feathers
- C able to fly
- D ectothermic




2 What characteristic did the **ancestors** of birds have?

- A three chambered heart
- B unicellular
- C ability to fly
- D ectothermic



3 A **bird** has **adapted bones** that are lightweight and nearly hollow, **large chest muscles**, forelimbs that form **wings**, and are the only animal with **feathers**.

- A true



4 **Contour** feathers

- A keep the bird warm
- B are located close to the skin of a bird
- C allow the bird to perch on a tree limb



5



PREVIEW

Please [Sign In](#) or [Sign Up](#) to download the printable version of this worksheet


7

- A gizzard
- B crop
- C incisor
- D ventricle



8

- A by flying as much as possible
- B by flying as little as possible
- C by eating as much as possible
- D by eating as little as possible



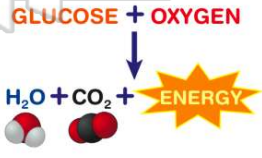
9 Along with food, what do birds need to make **energy**?

- A carbon dioxide
- B oxygen
- C water
- D light

$$\text{GLUCOSE} + \text{OXYGEN}$$

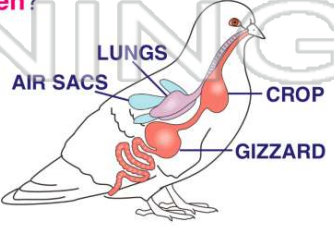
$$\downarrow$$

$$\text{H}_2\text{O} + \text{CO}_2 + \text{ENERGY}$$



10 What structure allows birds to take in more **oxygen**?

- A crop
- B gizzard
- C mouth
- D air sacs





ANSWER KEY

Which is a **characteristic** of **birds**?

- A** three chambered heart
- B** feathers
- C** able to fly
- D** ectothermic



(b)

What characteristic did the **ancestors** of **birds** have?

- A** three chambered heart
- B** unicellular
- C** ability to fly
- D** ectothermic



(c)

A **bird** has **adapted bones** that are lightweight and nearly hollow, **large chest muscles**, forelimbs that form **wings**, and are the only animal with **feathers**.

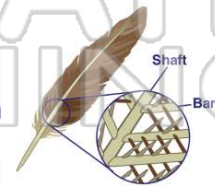


(a)

- A** true
- B** false

Contour feathers

- A** keep the bird warm
- B** are located close to the skin of a bird
- C** allow the bird to perch on a tree limb
- D** give a bird balance and help



(d)



PREVIEW

Please [Sign In](#) or [Sign Up](#) to download the printable version of this worksheet

- C** incisor
- D** ventricle

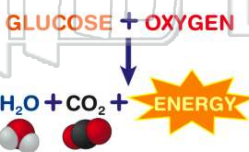


- A** by flying as much as possible
- B** by flying as little as possible
- C** by eating as much as possible
- D** by eating as little as possible



Along with food, what do birds need to make **energy**?

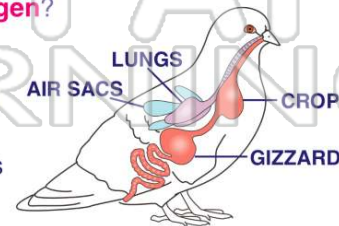
- A** carbon dioxide
- B** oxygen
- C** water
- D** light



(b)

What structure allows birds to take in more **oxygen**?

- A** crop
- B** gizzard
- C** mouth
- D** air sacs



(d)