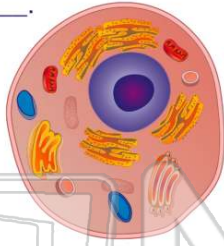




Name _____ Class _____ Date _____

1 The **structures** that are **within a cell** are known as _____.

- A cell walls
- B cytoplasm
- C organelles
- D the nucleus



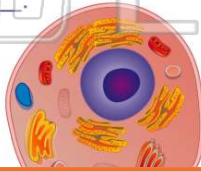
2 All _____ cells have a **cell wall**.

- A plant
- B animal
- C bacteria
- D protist



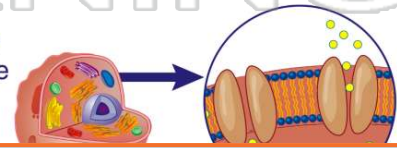
3 The **outer layer** of an animal cell is called the _____.

- A cell wall
- B cell membrane
- C nucleus
- D nuclear membrane



4 The **cell membrane** contains **pores** that allow materials in and out of the cell.

- A true
- B false



PREVIEW

Please [Sign In](#) or [Sign Up](#) to download the printable version of this worksheet

- A the nucleolus
- B the chromatin

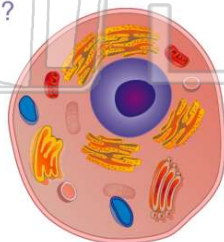


- B most
- C some
- D none



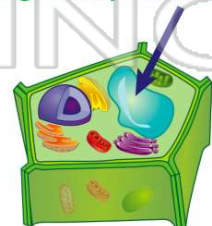
9 Which **cell structure** is located in the **cytoplasm** of a cell?

- A cell wall
- B cell membrane
- C ribosomes
- D pore



10 Which **organelles** in the cytoplasm are known as the **storage compartments**?

- A Golgi bodies
- B vacuoles
- C endoplasmic reticulum
- D lysosomes

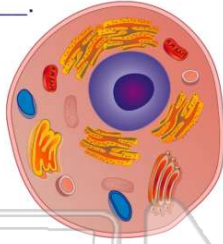




ANSWER KEY

The **structures** that are **within a cell** are known as _____.

- A** cell walls
- B** cytoplasm
- C** organelles
- D** the nucleus



(C)

All _____ cells have a **cell wall**.

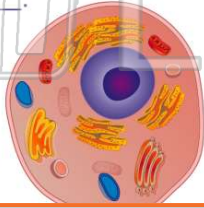
- A** plant
- B** animal
- C** bacteria
- D** protist



(a)

The **outer layer** of an **animal cell** is called the _____.

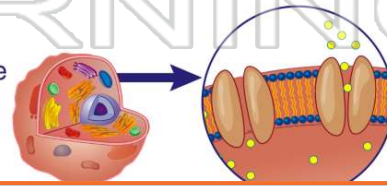
- A** cell wall
- B** cell membrane
- C** nucleus
- D** nuclear membrane



(b)

The **cell membrane** contains **pores** that allow materials in and out of the cell.

- A** true
- B** false



(a)



PREVIEW

Please [Sign In](#) or [Sign Up](#) to download the printable version of this worksheet

- A** the nucleolus
- B** the chromatin

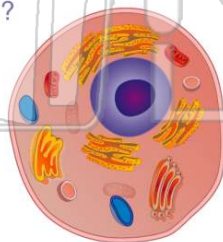


- C** some
- D** none



Which **cell structure** is located in the **cytoplasm** of a cell?

- A** cell wall
- B** cell membrane
- C** ribosomes
- D** pore



(C)

Which **organelles** in the **cytoplasm** are known as the **storage compartments**?

- A** Golgi bodies
- B** vacuoles
- C** endoplasmic reticulum
- D** lysosomes



(b)