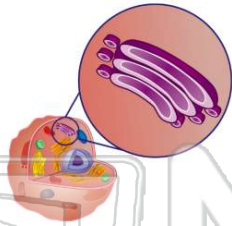




Name _____ Class _____ Date _____

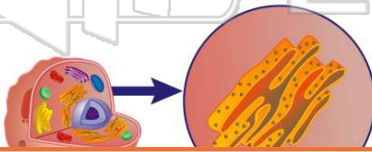
1 This structure **directs** newly made materials to where they need to go.

- A Golgi bodies
- B vacuoles
- C endoplasmic reticulum
- D lysosomes



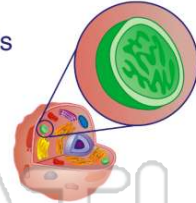
3 The **endoplasmic reticulum** transports materials around the cell.

- A true
- B false



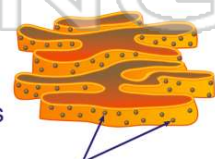
2 The **lysosomes** _____.

- A direct newly made materials around the cell
- B transport materials around the cell
- C make proteins
- D break down molecules



4 **Ribosomes** _____.

- A direct newly made materials around the cell
- B transport materials around the cell



5

V
A
E
C
D



PREVIEW

Please [Sign In](#) or [Sign Up](#) to download the printable version of this worksheet

7

B false



- A cell membrane
- B cell wall
- C nucleus
- D mitochondria



9

A plant cell has a **large central vacuole** while an animal cell only has a small vacuoles.

- A true
- B false



10 The **chloroplasts** are important to plant cells because they _____.

- A decide what comes in and goes out of the cell
- B produce proteins for the cell
- C store nutrients and waste
- D capture energy from the sun and convert it into food

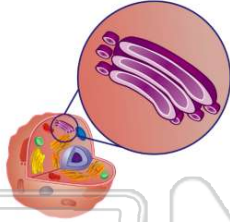




ANSWER KEY

This structure **directs** newly made materials to where they need to go.

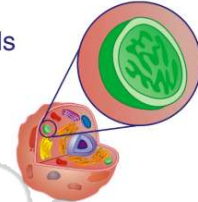
- A** Golgi bodies
- B** vacuoles
- C** endoplasmic reticulum
- D** lysosomes



(a)

The **lysosomes** _____.

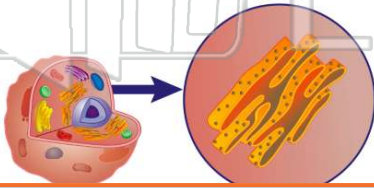
- A** direct newly made materials around the cell
- B** transport materials around the cell
- C** make proteins
- D** break down molecules



(d)

The **endoplasmic reticulum** transports materials around the cell.

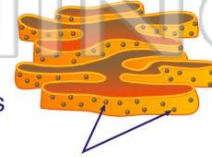
- A** true
- B** false



(a)

Ribosomes _____.

- A** direct newly made materials around the cell
- B** transport materials around the cell
- C** make proteins



(c)

W
A
B
C
D



PREVIEW

Please [Sign In](#) or [Sign Up](#) to download the printable version of this worksheet



- B** cell wall
- C** nucleus
- D** mitochondria



A plant cell has a **large central vacuole** while an animal cell only has a small vacuoles.

- A** true
- B** false



(a)

The **chloroplasts** are important to plant cells because they _____.

- A** decide what comes in and goes out of the cell
- B** produce proteins for the cell
- C** store nutrients and waste
- D** capture energy from the sun and convert it into food



(d)