



Name \_\_\_\_\_ Class \_\_\_\_\_ Date \_\_\_\_\_

1 An **endotherm** controls its **internal temperature** by producing heat, making it nearly the same temperature inside of its body at all times.



- A true
- B false

2 What substance is **released** by the **gills** of a fish?



- A carbon dioxide
- B oxygen
- C nitrogen
- D energy

3 What happens to the blood in a **closed-circulatory system**?

- A It bathes the internal organs.
- B It stays within the blood vessels.
- C It brings carbon dioxide to the cells.
- D It brings oxygen out of the cells.

4 In a **closed-circulatory system**, the blood moves \_\_\_\_\_.



- A in and out
- B one-way
- C two-ways
- D up and down



## PREVIEW

Please [Sign In](#) or [Sign Up](#) to download the printable version of this worksheet

7

Vision

A skeleton

B fur

C vision

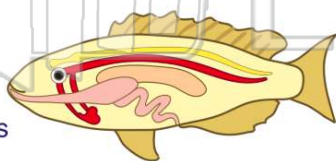
D environment

- B fur
- C scales
- D leather



9 Which organisms have a structure called a **swim bladder**?

- A goldfish
- B hagfish
- C sharks
- D lampreys



10 The **most numerous** group of fishes are the \_\_\_\_\_.

- A jawless
- B cartilaginous
- C bony
- D hagfish





## ANSWER KEY

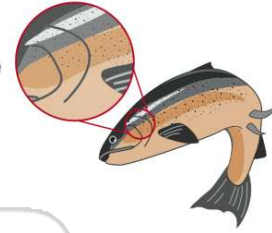
An **endotherm** controls its **internal temperature** by producing heat, making it nearly the same temperature inside of its body at all times.



- A true
- B false

(a)

What substance is **released** by the **gills** of a fish?



- A carbon dioxide
- B oxygen
- C nitrogen
- D energy

(a)

What happens to the blood in a **closed-circulatory system**?

- A It bathes the internal organs.
- B It stays within the blood vessels.
- C It brings carbon dioxide to the cells.
- D It brings oxygen out of the cells.

(b)

In a **closed-circulatory system**, the blood moves

- A in and out
- B one-way
- C two-ways
- D up and down



(b)



## PREVIEW

Please [Sign In](#) or [Sign Up](#) to download the printable version of this worksheet

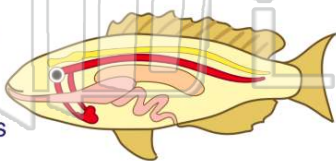
D environment

D leather



Which organisms have a structure called a **swim bladder**?

- A goldfish
- B hagfish
- C sharks
- D lampreys



(a)

The **most numerous** group of fishes are the \_\_\_\_\_.

- A jawless
- B cartilaginous
- C bony
- D hagfish



(c)