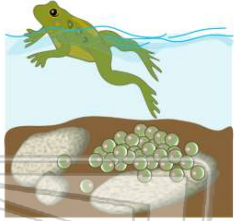




Name \_\_\_\_\_ Class \_\_\_\_\_ Date \_\_\_\_\_

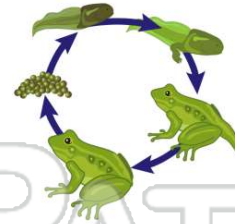
1 An **amphibian** is a vertebrate that is **endothermic** and lives its early life in water.

- A true
- B false



2 **Amphibians** live as a **tadpole** in a \_\_\_\_\_ environment.

- A watery
- B dry
- C land
- D cold



3 A **tadpole** has \_\_\_\_\_ circulatory system, but when it grows to an **adult amphibian**, it has \_\_\_\_\_ circulatory system.

- A an open, a closed
- B a closed, an open



4 What **function** does the heart's **ventricle** have?

- A directs the blood
- B pumps the blood
- C filters the blood
- D drains the blood



## PREVIEW

Please [Sign In](#) or [Sign Up](#) to download the printable version of this worksheet

7  
V  
A  
E  
C turtle  
D mouse



- B dry
- C high
- D salt water



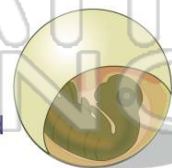
9 What **adaptations** make it possible for reptiles to live their entire lives on **land** without drying out?

- A tough skin and kidneys
- B heart and lungs
- C webbed feet and swim bladder
- D brain and stomach



10 How does a **reptilian egg** survive on **land**?

- A Water is conserved inside the shell.
- B Water is taken into the shell.
- C The shell is too hard to break.
- D The shell is well camouflaged.

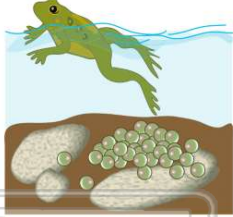




## ANSWER KEY

An **amphibian** is a vertebrate that is **endothermic** and lives its early life in water.

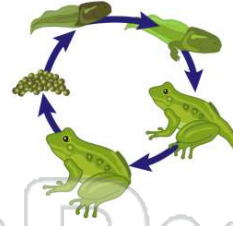
- A true
- B false



(b)

**Amphibians** live as a **tadpole** in a \_\_\_\_\_ environment.

- A watery
- B dry
- C land
- D cold



(a)

A **tadpole** has \_\_\_\_\_ circulatory system, but when it grows to an **adult amphibian**, it has \_\_\_\_\_ circulatory system.

- A an open, a closed
- B a closed, an open
- C a double loop, a single loop



(d)

What **function** does the heart's **ventricle** have?

- A directs the blood
- B pumps the blood
- C filters the blood
- D drains the blood



(b)



## PREVIEW

Please [Sign In](#) or [Sign Up](#) to download the printable version of this worksheet



What **adaptations** make it possible for reptiles to live their entire lives on **land** without drying out?

- A tough skin and kidneys
- B heart and lungs
- C webbed feet and swim bladder
- D brain and stomach



(a)

D salt water



How does a **reptilian egg** survive on **land**?

- A Water is conserved inside the shell.
- B Water is taken into the shell.
- C The shell is too hard to break.
- D The shell is well camouflaged.



(a)