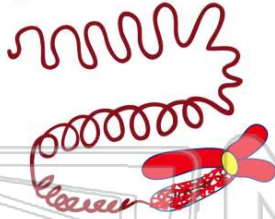




Name \_\_\_\_\_ Class \_\_\_\_\_ Date \_\_\_\_\_

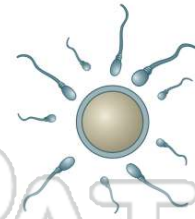
1 A **chromosome** is condensed chromatin that holds the **genetic material** of an organism.

- A true
- B false



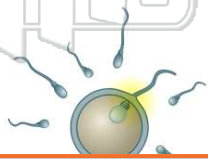
2 A **sex cell** carries \_\_\_\_\_ of the total number of chromosomes.

- A 25%
- B 50%
- C 75%
- D 100%



3 How many **parent sex cells** are needed to create a **fertilized cell**?

- A 2
- B 4
- C 6
- D 8



4 A **human cell** has a total of \_\_\_\_\_ chromosomes.

- A 23
- B 33
- C 42
- D 46



5



## PREVIEW

Please [Sign In](#) or [Sign Up](#) to download the printable version of this worksheet

7

- B ten
- C hundreds
- D thousands



B false



9 If an organism has the **same alleles** for a gene, that organism would be \_\_\_\_\_ for that gene.

- A dominant
- B recessive
- C homozygous
- D heterozygous



10 The **scientific study of heredity** is called \_\_\_\_\_.

- A genetics
- B biology
- C ecology
- D psychology

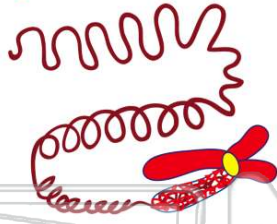




## ANSWER KEY

A **chromosome** is condensed chromatin that holds the **genetic material** of an organism.

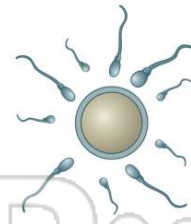
- A true
- B false



(a)

A **sex cell** carries \_\_\_\_\_ of the total number of chromosomes.

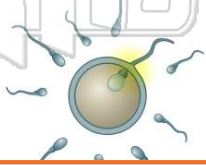
- A 25%
- B 50%
- C 75%
- D 100%



(b)

How many **parent sex cells** are needed to create a **fertilized cell**?

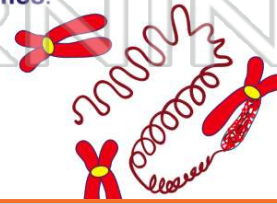
- A 2
- B 4
- C 6
- D 8



(a)

A **human cell** has a total of \_\_\_\_\_ chromosomes.

- A 23
- B 33
- C 42
- D 46



(d)



## PREVIEW

Please [Sign In](#) or [Sign Up](#) to download the printable version of this worksheet

- C hundreds
- D thousands



If an organism has the **same alleles** for a gene, that organism would be \_\_\_\_\_ for that gene.

- A dominant
- B recessive
- C homozygous
- D heterozygous



(c)

The **scientific study of heredity** is called \_\_\_\_\_.

- A genetics
- B biology
- C ecology
- D psychology



(a)