



Name \_\_\_\_\_ Class \_\_\_\_\_ Date \_\_\_\_\_

1 Which is **characteristic** of an **animal**?

- A heterotrophic
- B autotrophic
- C unicellular
- D prokaryotic



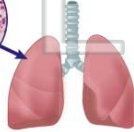
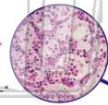
2 Animals are able to **move around their environment** and they **reproduce sexually**.

- A true
- B false



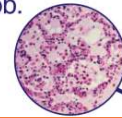
3 In animals, a **tissue** is made up of **similar cells** that

- A make different materials
- B perform different functions
- C perform similar functions



4 \_\_\_\_\_ is a **group of tissues** that come together to perform a specific job that is more complex than each individual tissues specific job.

- A A tissue
- B An organ



5



## PREVIEW

Please [Sign In](#) or [Sign Up](#) to download the printable version of this worksheet

7

- B conjugation
- C budding
- D sexually



- B hydra
- C sponge
- D fishes



9 Which is **not** a reason that scientists believe animals adapted to have the **ability to move**?

- A to reproduce
- B to gather food
- C to clean themselves
- D to escape predators



10 An animal does **not** need \_\_\_\_\_ from its environment.

- A carbon dioxide
- B oxygen
- C food
- D water





## ANSWER KEY

Which is **characteristic** of an **animal**?

- A heterotrophic
- B autotrophic
- C unicellular
- D prokaryotic



(a)

Animals are able to **move around their environment** and they **reproduce sexually**.

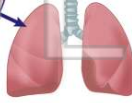
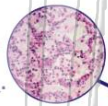
- A true
- B false



(a)

In animals, a **tissue** is made up of **similar cells** that \_\_\_\_\_.

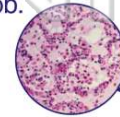
- A make different materials
- B perform different functions
- C perform similar functions
- D produce many materials



(c)

\_\_\_\_\_ is a **group of tissues** that come together to perform a specific job that is more complex than each individual tissues specific job.

- A A tissue
- B An organ
- C An organ system



(b)



## PREVIEW

Please [Sign In](#) or [Sign Up](#) to download the printable version of this worksheet

D sexually



D fishes



Which is **not** a reason that scientists believe animals adapted to have the **ability to move**?

- A to reproduce
- B to gather food
- C to clean themselves
- D to escape predators



(c)

An animal does **not** need \_\_\_\_\_ from its environment.

- A carbon dioxide
- B oxygen
- C food
- D water



(a)