



Name _____ Class _____ Date _____

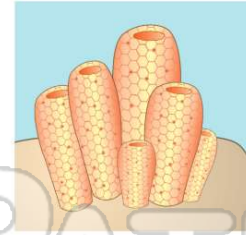
1 When facing the head this way, a **horse** is an example of _____.

- A a geometric line
- B asymmetry
- C radial symmetry
- D bilateral symmetry



2 Which animal has **asymmetry**?

- A sponge
- B hydra
- C human
- D star fish



3 Most animals that have **radial symmetry** live _____.

- A in trees
- B in other animals
- C in water
- D on land



4 Which is **not** a **benefit** of having **bilateral symmetry**?

- A moving
- B sleeping
- C listening
- D seeing



5



PREVIEW

Please [Sign In](#) or [Sign Up](#) to download the printable version of this worksheet

7

- A learned trait
- B instinct
- C stimulus
- D behavior



- A learning
- B instinct
- C stimulus
- D behavior



9

_____ is when a behavior **changes** due to experiences.

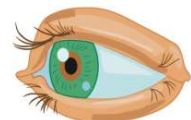
- A Learning
- B Instinct
- C Stimulus
- D Behavior



10

After sitting in a dark classroom, when the lights are **turned on**, all of the students quickly **cover their eyes** from the bright light. The **stimulus** is _____.

- A turning on the lights
- B covering their eyes
- C both
- D neither





ANSWER KEY

When facing the head this way, a **horse** is an example of _____.

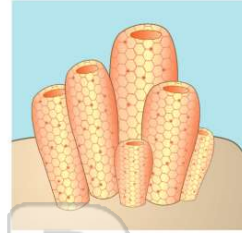
- A a geometric line
- B asymmetry
- C radial symmetry
- D bilateral symmetry



(d)

Which animal has **asymmetry**?

- A sponge
- B hydra
- C human
- D star fish



(a)

Most animals that have **radial symmetry** live _____.

- A in trees
- B in other animals
- C in water
- D on land



(c)

Which is **not** a **benefit** of having **bilateral symmetry**?

- A moving
- B sleeping
- C listening
- D seeing



(b)



PREVIEW

Please [Sign In](#) or [Sign Up](#) to download the printable version of this worksheet

- C stimulus
- D behavior

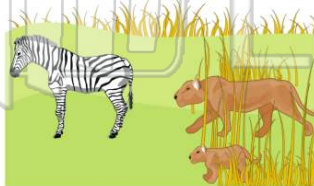


- C stimulus
- D behavior



_____ is when a behavior **changes** due to experiences.

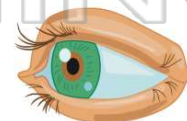
- A Learning
- B Instinct
- C Stimulus
- D Behavior



(a)

After sitting in a dark classroom, when the lights are **turned on**, all of the students quickly **cover their eyes** from the bright light. **The stimulus is** _____.

- A turning on the lights
- B covering their eyes
- C both
- D neither



(a)