



Name \_\_\_\_\_ Class \_\_\_\_\_ Date \_\_\_\_\_

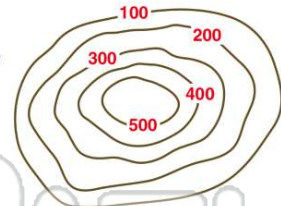
1 Every type of map has to have which of the following in order to be **valuable** and **useful**?

- A a legend
- B a date and a compass rose
- C a title and scale
- D all of the above



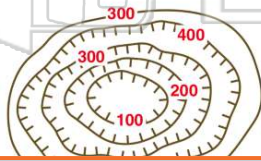
2 What would you call the **landform** indicated by the contour lines in this picture?

- A a mountain
- B a river valley
- C a hill
- D a crater



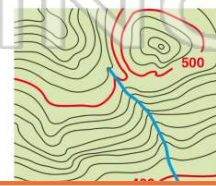
3 What would you call the **landform** indicated by the contour lines in this picture?

- A a mountain
- B a river valley
- C a hill
- D a crater



4 What **feature** is represented in this topographic map?

- A a mountain
- B a river valley
- C a depression
- D a steep cliff



## PREVIEW

Please [Sign In](#) or [Sign Up](#) to download the printable version of this worksheet

7 C the equator  
D true north



D 90° S



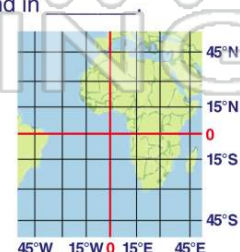
9 0° latitude is also known as \_\_\_\_\_.

- A the prime meridian
- B the equator
- C the 180 degree meridian
- D true north



10 The location identified by the coordinates of **40° S, 45° W** is found in \_\_\_\_\_.

- A the Northern Hemisphere
- B the Southern Hemisphere
- C Europe
- D Africa





## ANSWER KEY

Every type of map has to have which of the following in order to be **valuable** and **useful**?

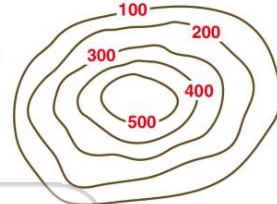
- A a legend
- B a date and a compass rose
- C a title and scale
- D all of the above



(d)

What would you call the **landform** indicated by the contour lines in this picture?

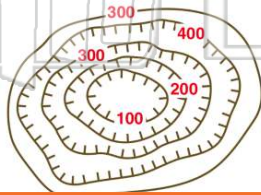
- A a mountain
- B a river valley
- C a hill
- D a crater



(c)

What would you call the **landform** indicated by the contour lines in this picture?

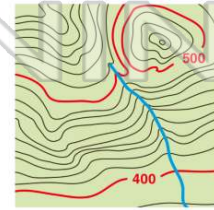
- A a mountain
- B a river valley
- C a hill
- D a crater



(d)

What **feature** is represented in this topographic map?

- A a mountain
- B a river valley
- C a depression
- D a steep cliff



(b)



## PREVIEW

Please [Sign In](#) or [Sign Up](#) to download the printable version of this worksheet

D true north



0° latitude is also known as \_\_\_\_\_.

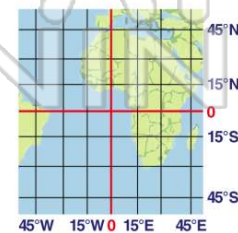
- A the prime meridian
- B the equator
- C the 180 degree meridian
- D true north



(b)

The location identified by the coordinates of **40° S, 45° W** is found in \_\_\_\_\_.

- A the Northern Hemisphere
- B the Southern Hemisphere
- C Europe
- D Africa



(b)