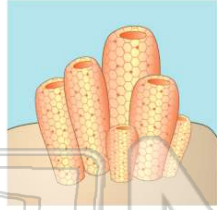




Name _____ Class _____ Date _____

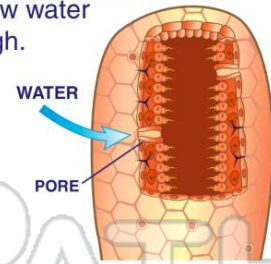
1 **Sponges** are considered to be **animals** because they _____.

- A move around their environment
- B are multicellular
- C are heterotrophic
- D have a mouth



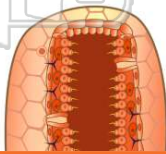
2 In a sponge's body, **pores** are tiny holes that allow water to pass through.

- A true
- B false



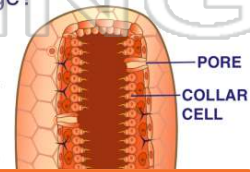
3 What absorbs the tiny **food** particles that pass through the pores of a sponge?

- A stomach
- B spikes
- C osculum
- D collar cells



4 Where are the **collar cells** located on the body of a sponge?

- A outside the body
- B inside the hollow cavity
- C inside the spikes



5

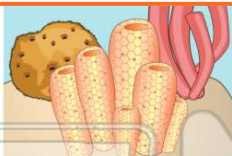


PREVIEW

Please [Sign In](#) or [Sign Up](#) to download the printable version of this worksheet

7

- A conjugation
- B mating
- C reproducing

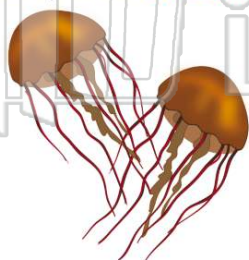


- A cnidarian
- B larva
- C infant
- D child



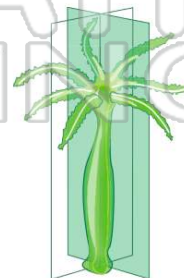
9 Which is an example of a **cnidarian**?

- A hydra
- B flatworm
- C sponge
- D planarian



10 All cnidarians have **bilateral symmetry**.

- A true
- B false

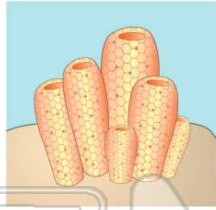




ANSWER KEY

Sponges are considered to be **animals** because they _____.

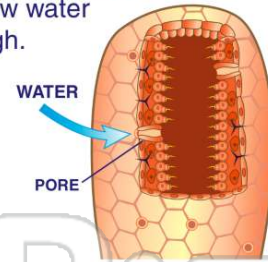
- A** move around their environment
- B** are multicellular
- C** are heterotrophic
- D** have a mouth



(c)

In a sponge's body, **pores** are tiny holes that allow water to pass through.

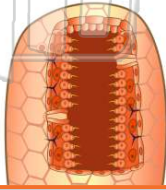
- A** true
- B** false



(a)

What absorbs the tiny **food** particles that pass through the pores of a sponge?

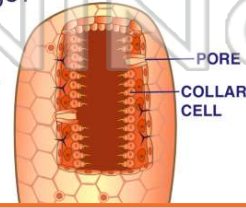
- A** stomach
- B** spikes
- C** osculum
- D** collar cells



(d)

Where are the **collar cells** located on the body of a sponge?

- A** outside the body
- B** inside the hollow cavity
- C** inside the spikes
- D** inside the pores



(b)



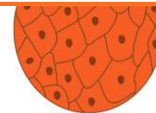
PREVIEW

Please [Sign In](#) or [Sign Up](#) to download the printable version of this worksheet

D reproducing

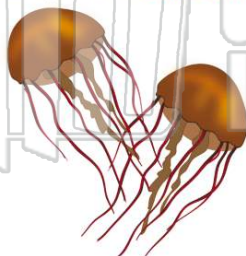


- B** larva
- C** infant
- D** child



Which is an example of a **cnidarian**?

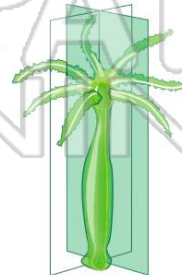
- A** hydra
- B** flatworm
- C** sponge
- D** planarian



(a)

All cnidarians have **bilateral symmetry**.

- A** true
- B** false



(b)