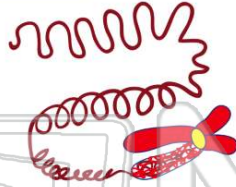




Name \_\_\_\_\_ Class \_\_\_\_\_ Date \_\_\_\_\_

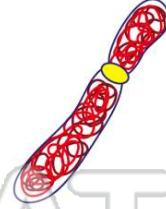
1 The **genetic material** that has the instructions for how the cell is to be run is called the \_\_\_\_\_.

- A nucleus
- B chromatin
- C chromatid
- D carbohydrate



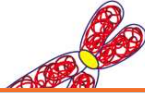
2 What is **one half or one rod** of the **condensed chromatin** called?

- A DNA
- B chromatin
- C chromatid
- D chromosome



3 What is the **two daughter strands** of a replicated chromatin that are condensed into **two rod shaped structures** and connected by a centromere called?

- A DNA
- B chromatin



4 The following describes \_\_\_\_\_ during **mitosis**. The **chromatin condenses** and **spindle fibers form** at each side of the cell. The nuclear membrane breaks apart.

- A prophase
- B metaphase



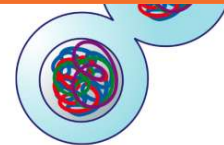
## PREVIEW

Please [Sign In](#) or [Sign Up](#) to download the printable version of this worksheet

7  
A prophase  
B metaphase  
C anaphase  
D telophase

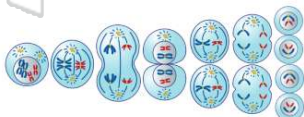


- B telophase
- C interphase
- D anaphase



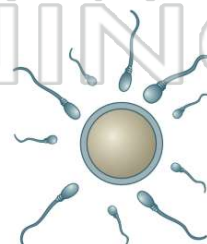
9 A **process** that reduces the total number of **chromosomes to half** and **forms the sex cells** is called \_\_\_\_\_.

- A mitosis
- B meiosis
- C replication
- D reduction



10 The process of **meiosis only** creates **sex cells**.

- A true
- B false

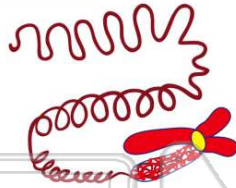




## ANSWER KEY

The **genetic material** that has the instructions for how the cell is to be run is called the \_\_\_\_\_.

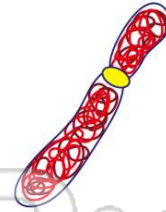
- A nucleus
- B chromatin
- C chromatid
- D carbohydrate



(b)

What is **one half or one rod** of the **condensed chromatin** called?

- A DNA
- B chromatin
- C chromatid
- D chromosome



(c)

What is the **two daughter strands** of a replicated chromatin that are condensed into **two rod shaped structures** and connected by a centromere called?

- A DNA
- B chromatin
- C chromatid
- D



(d)

The following describes \_\_\_\_\_ during **mitosis**. The **chromatin condenses** and **spindle fibers form** at each side of the cell. The nuclear membrane breaks apart.

- A prophase
- B metaphase
- C anaphase



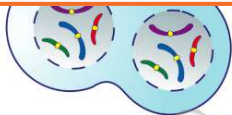
(a)



## PREVIEW

Please [Sign In](#) or [Sign Up](#) to download the printable version of this worksheet

- A prophase
- B metaphase
- C anaphase
- D telophase

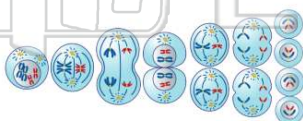


- C interphase
- D anaphase



A **process** that reduces the total number of **chromosomes to half** and **forms the sex cells** is called \_\_\_\_\_.

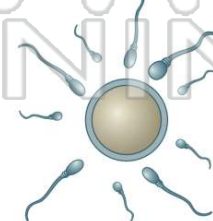
- A mitosis
- B meiosis
- C replication
- D reduction



(b)

The process of **meiosis only** creates **sex cells**.

- A true
- B false



(a)