



Name \_\_\_\_\_ Class \_\_\_\_\_ Date \_\_\_\_\_

1 \_\_\_\_\_ is an organism in its earliest stages of growth.

- A A seed
- B An egg
- C A sperm
- D An embryo



2 **Cotyledons** are one or two seed leaf structures that **store food** within.

- A true
- B false



3 What is the purpose of the **seed coat**?

- A to keep the embryo warm
- B to keep the embryo dry
- C to keep the embryo cold



4 During **germination**, the \_\_\_\_\_

- A plant begins growing
- B fertilized egg turns into an embryo
- C weather is good
- D plant reproduces



5

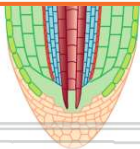


## PREVIEW

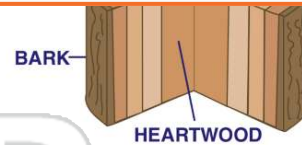
Please [Sign In](#) or [Sign Up](#) to download the printable version of this worksheet

7

- C xylem
- D phloem



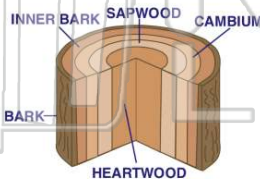
- C long
- D short



9

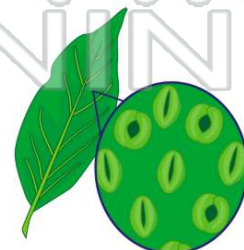
The **cambium** \_\_\_\_\_

- A brings food to the plant cells
- B brings waste away from the cells
- C controls the vascular tissue
- D produces the vascular tissue



10 Which structures have **stomata**?

- A roots
- B stems
- C leaves
- D xylem





## ANSWER KEY

\_\_\_\_\_ is an organism in its earliest stages of growth.

- A A seed
- B An egg
- C A sperm
- D An embryo



(d)

**Cotyledons** are one or two seed leaf structures that store food within.

- A true
- B false



(a)

What is the purpose of the **seed coat**?

- A to keep the embryo warm
- B to keep the embryo dry
- C to keep the embryo cold
- D to protect embryo



(d)

During **germination**, the \_\_\_\_\_.

- A plant begins growing
- B fertilized egg turns into an embryo
- C weather is good
- D plant reproduces



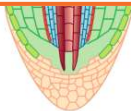
(a)



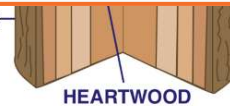
## PREVIEW

Please [Sign In](#) or [Sign Up](#) to download the printable version of this worksheet

D phloem



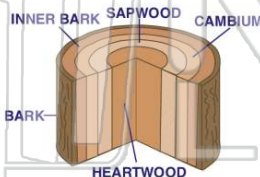
BARK



HEARTWOOD

The **cambium**

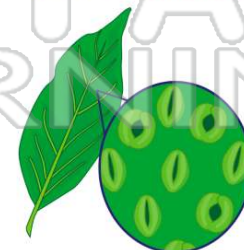
- A brings food to the plant cells
- B brings waste away from the cells
- C controls the vascular tissue
- D produces the vascular tissue



(d)

Which structures have **stomata**?

- A roots
- B stems
- C leaves
- D xylem



(c)