



Name _____ Class _____ Date _____

1 What is the reason why stirring sugar into a cup of coffee **increases** the **concentration** of the sugar?

A more solvent dissolves
B more solute dissolves
C more water dissolves
D more sugar settles out



2 A **cube of sugar** does **not** dissolve as well as a **teaspoon of sugar**. This is because when trying to dissolve a cube, _____.

A the cube is too big
B there is too much solvent
C the solvent cannot reach the solute
D the cube is chemically combined



3 Acid rain forms when pollutants in the air combine with water vapor to make **sulfuric acid**. What is the reason that acid **cannot be removed** from acid rain?

A acid rain is a single compound
B acid rain feels slimy



4 Chocolate ice cream is produced by combining **sugar**, **cream**, and **ice**. Plain chocolate ice cream is classified as which of the following?

A a homogeneous mixture
B a heterogeneous mixture



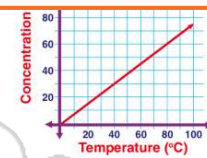
PREVIEW

Please [Sign In](#) or [Sign Up](#) to download the printable version of this worksheet

7

B air is a solution
C air is a solvent
D air has one kind of gas

A true
B false



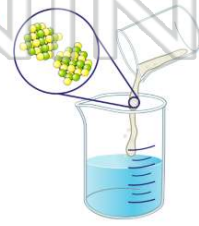
9 What is the reason why **oil** and **water** do **not** mix?

A water dissolves oil
B oil dissolves water
C water does not dissolve oil
D oil chemically combines with water



10 **Concentration** is the percentage of **solvent** dissolved in a solution. True or false?

A true
B false





ANSWER KEY

What is the reason why stirring sugar into a cup of coffee **increases** the **concentration** of the sugar?

- A more solvent dissolves
- B more solute dissolves
- C more water dissolves
- D more sugar settles out



(b)

A **cube of sugar** does **not** dissolve as well as a **teaspoon of sugar**. This is because when trying to dissolve a cube, _____.

- A the cube is too big
- B there is too much solvent
- C the solvent cannot reach the solute
- D the cube is chemically combined



(c)

Acid rain forms when pollutants in the air combine with water vapor to make **sulfuric acid**. What is the reason that acid **cannot be removed** from acid rain?

- A acid rain is a single compound
- B acid rain feels slimy
- C acid rain is a suspension
- D



(a)

Chocolate ice cream is produced by combining **sugar**, **cream**, and **ice**. Plain chocolate ice cream is classified as which of the following?

- A a homogeneous mixture
- B a heterogeneous mixture
- C one compound
- D



(a)

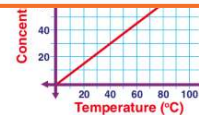


PREVIEW

Please [Sign In](#) or [Sign Up](#) to download the printable version of this worksheet

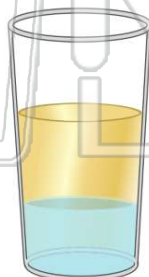
D air has one kind of gas

D false



What is the reason why **oil** and **water** do **not** mix?

- A water dissolves oil
- B oil dissolves water
- C water does not dissolve oil
- D oil chemically combines with water

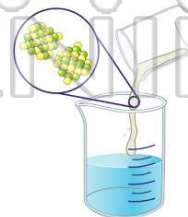


(c)

Concentration is the percentage of **solvent** dissolved in a solution.

True or false?

- A true
- B false



(b)