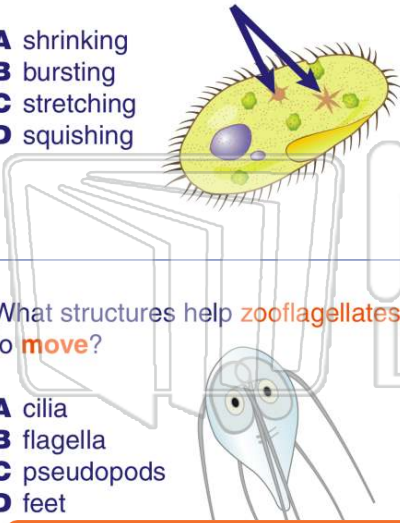




Name _____ Class _____ Date _____

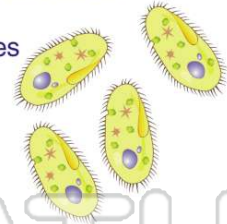
1 What does the **contractile vacuole** prevent from happening to protists?

- A shrinking
- B bursting
- C stretching
- D squishing



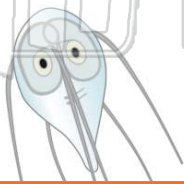
2 What helps **ciliates** such as paramecium **move** around their environment?

- A contractile vacuoles
- B pseudopods
- C cilia
- D flagella



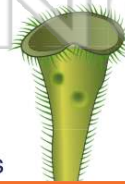
3 What structures help **zooflagellates** to **move**?

- A cilia
- B flagella
- C pseudopods
- D feet



4 **Plantlike protists** are all _____

- A heterotrophs
- B autotrophs
- C both heterotrophs and autotrophs
- D neither heterotrophs



5

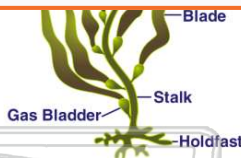


PREVIEW

Please [Sign In](#) or [Sign Up](#) to download the printable version of this worksheet

7

- A holdfast
- B blade
- C stalk
- D gas bladder



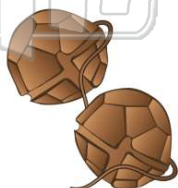
- A flagellum
- B eyes
- C an eyespot
- D cilia



9

If a **dinoflagellate** was **compared** to a large multicellular organism, what would be the best organism to compare it to?

- A kangaroo
- B dog
- C turtle
- D dolphin



10 **Fungi** are organisms that have a _____, like a **plant**, and are _____, like an **animal**.

- A cell membrane, autotrophic
- B cell wall, autotrophic
- C cell membrane, heterotrophic
- D cell wall, heterotrophic

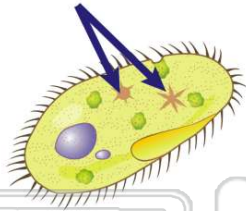




ANSWER KEY

What does the **contractile vacuole** prevent from happening to protists?

- A shrinking
- B bursting
- C stretching
- D squishing



(b)

What helps **ciliates** such as paramecium **move** around their environment?

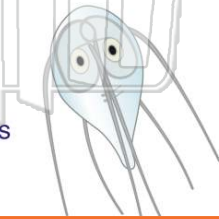
- A contractile vacuoles
- B pseudopods
- C cilia
- D flagella



(c)

What structures help **zooflagellates** to **move**?

- A cilia
- B flagella
- C pseudopods
- D feet



(b)

Plantlike protists are all _____.

- A heterotrophs
- B autotrophs
- C both heterotrophs and autotrophs
- D neither heterotrophs nor autotrophs



(b)



PREVIEW

Please [Sign In](#) or [Sign Up](#) to download the printable version of this worksheet

D stalk

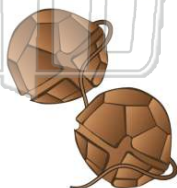


D an eyespot



If a **dinoflagellate** was **compared** to a large multicellular organism, what would be the best organism to compare it to?

- A kangaroo
- B dog
- C turtle
- D dolphin



(c)

Fungi are organisms that have a _____, like a **plant**, and are _____, like an **animal**.

- A cell membrane, autotrophic
- B cell wall, autotrophic
- C cell membrane, heterotrophic
- D cell wall, heterotrophic



(d)