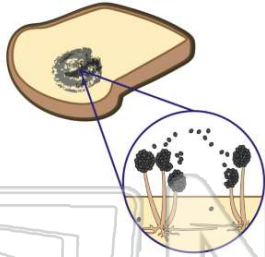




Name _____ Class _____ Date _____

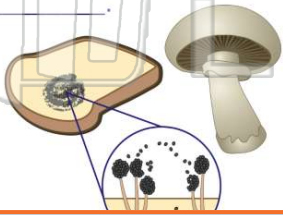
1 Which is **not** a type of **funguslike** protists?

- A downy mildews
- B mildews
- C slime molds
- D water molds



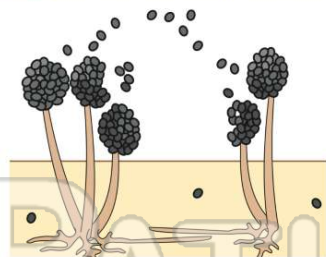
3 All fungi are _____.

- A autotrophic
- B heterotrophic
- C plantlike
- D animalike



2 **Funguslike** protists do **not** produce **spores**.

- A true
- B false



4 Which structure of a **fungus** is similar to the **root** of a plant?

- A the cap
- B the gills
- C the hyphae
- D the stalk



5

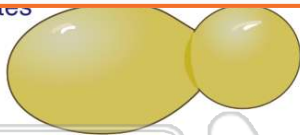


PREVIEW

Please [Sign In](#) or [Sign Up](#) to download the printable version of this worksheet

7

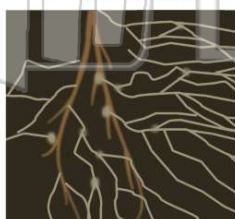
- A dimorphogates
- C yeast
- D diatoms



- B when the weather is warm
- C when growing conditions are favorable
- D when growing conditions are unfavorable

9 With which kingdom do some species of **fungi** have a mutually **symbiotic relationship**?

- A Animal
- B Plant
- C Protist
- D Eubacteria



10 **Athlete's Foot** is a **fungal disease** that grows on humans.

- A true
- B false

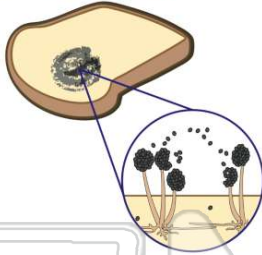




ANSWER KEY

Which is **not** a type of **funguslike** protists?

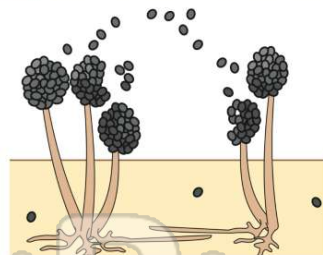
- A downy mildews
- B mildews
- C slime molds
- D water molds



(b)

Funguslike protists do **not** produce **spores**.

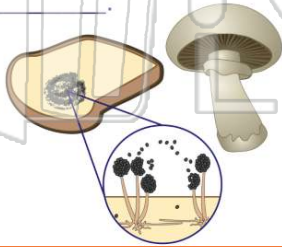
- A true
- B false



(b)

All fungi are _____.

- A autotrophic
- B heterotrophic
- C plantlike
- D animalike



(b)

Which structure of a **fungus** is similar to the **root** of a plant?

- A the cap
- B the gills
- C the hyphae
- D the stalk



(c)



PREVIEW

Please [Sign In](#) or [Sign Up](#) to download the printable version of this worksheet

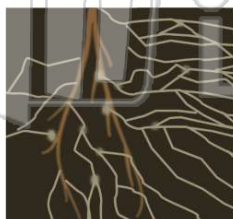
D diatoms



- are favorable
- D when growing conditions are unfavorable

With which kingdom do some species of **fungi** have a mutually **symbiotic relationship**?

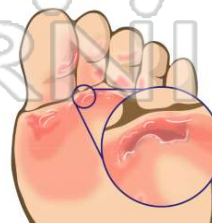
- A Animal
- B Plant
- C Protist
- D Eubacteria



(b)

Athlete's Foot is a **fungal disease** that grows on humans.

- A true
- B false



(a)