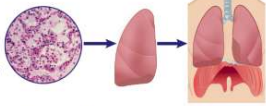
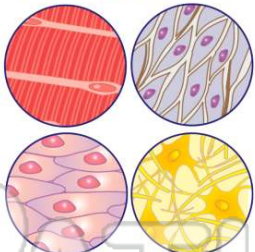





Name _____ Class _____ Date _____

- 1 Which levels of the human body is correct from **smallest to largest**?
- A organ, organ system, tissue, and cell
- B organ system, organ, tissue, and cell
- C cell, tissue, organ system, and organ
- D cell, tissue, organ, and organ system
- 

- 3 What is the **function** of **epithelial** tissue?
- A connects different parts of the body together
- B covers all surfaces of the body
- C controls the movement of the body
- D brings information from the body

- 2 Which is **not** a type of **tissue**?
- A epithelial
- B connective
- C epidermis
- D nerve
- 

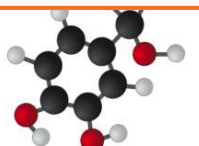
- 4 **Homeostasis** _____.
- A is internal balance
- B are similar organ systems
- C is a reaction to stress
- D are the same alleles
- 




PREVIEW

Please [Sign In](#) or [Sign Up](#) to download the printable version of this worksheet

- 7
- A true
- B false

- B Glucose
- C Carbon dioxide
- D Adrenaline
- 

- 9 What **response** will you have if a growling dog is face to face with you and the dog is about to come after you?
- A happy
- B angry
- C fight-or-flight
- D fly away
- 

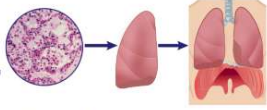
- 10 Which is a major **function** of the **skeletal system**?
- A store materials
- B release adrenaline into your bloodstream
- C allows you to sweat through pores
- D breaks down food particles
- 



ANSWER KEY

Which levels of the human body is correct from **smallest to largest**?

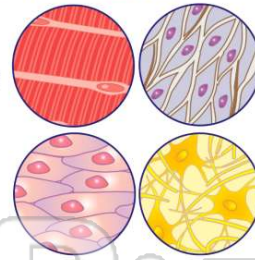
- A organ, organ system, tissue, and cell
- B organ system, organ, tissue, and cell
- C cell, tissue, organ system, and organ
- D cell, tissue, organ, and organ system



(d)

Which is **not** a type of **tissue**?

- A epithelial
- B connective
- C epidermis
- D nerve



(c)

What is the **function** of **epithelial** tissue?

- A connects different parts of the body together
- B covers all surfaces of the body
- C controls the movement of the body
- D brings information from the body to the brain and back out to the body

(b)

Homeostasis _____

- A is internal balance
- B are similar organ systems
- C is a reaction to stress
- D are the same alleles

(a)



PREVIEW

Please [Sign In](#) or [Sign Up](#) to download the printable version of this worksheet

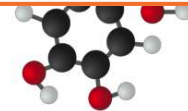
What **response** will you have if a growling dog is face to face with you and the dog is about to come after you?

- A happy
- B angry
- C fight-or-flight
- D fly away



(c)

D Adrenaline



Which is a major **function** of the **skeletal system**?

- A store materials
- B release adrenaline into your bloodstream
- C allows you to sweat through pores
- D breaks down food particles



(a)