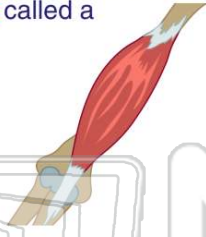




Name \_\_\_\_\_ Class \_\_\_\_\_ Date \_\_\_\_\_

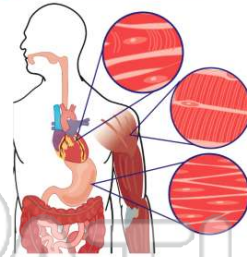
1 At the end of each muscle is a **strong connective tissue** that attaches your **muscles to bones** called a \_\_\_\_\_.

- A tendon
- B ligament
- C epithelial
- D cartilage



2 **Smooth muscles** are \_\_\_\_\_.

- A striated
- B voluntary
- C immovable
- D involuntary



3 What **structure** is an example of a **cardiac muscle**?

- A heart
- B brain
- C bicep
- D stomach



4 How do muscles get back to their **original length**?

- A by extending back
- B by another muscle contracting
- C the tendon pulls it back



5

**PREVIEW**

Please [Sign In](#) or [Sign Up](#) to download the printable version of this worksheet

7

- A warm, warm
- B cool, cool
- C warm, cool
- D cool, warm

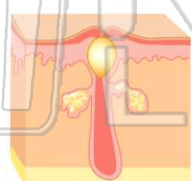


- C hair
- D skin cells



9 **Acne** is \_\_\_\_\_.

- A a disease of the skin
- B a bacterial infection of the skin
- C when cells divide uncontrollably
- D way of cleaning the skin



10 \_\_\_\_\_ is when cells **divide uncontrollably**.

- A A bacterial infection
- B Cell disease
- C Cancer
- D Acne

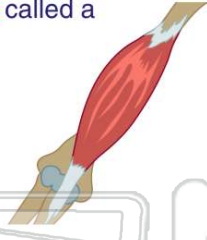




## ANSWER KEY

At the end of each muscle is a **strong connective tissue** that attaches your muscles to bones called a \_\_\_\_\_.

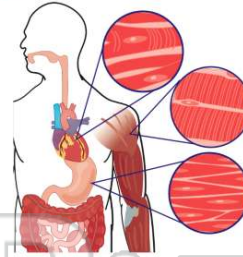
- A tendon
- B ligament
- C epithelial
- D cartilage



(a)

**Smooth muscles** are \_\_\_\_\_.

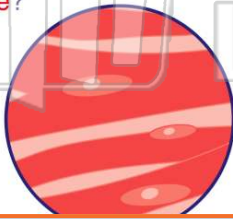
- A striated
- B voluntary
- C immovable
- D involuntary



(d)

What **structure** is an example of a **cardiac muscle**?

- A heart
- B brain
- C bicep
- D stomach



(a)

How do muscles get back to their **original length**?

- A by extending back
- B by another muscle contracting
- C the tendon pulls it back
- D the ligament pulls it back



(b)



## PREVIEW

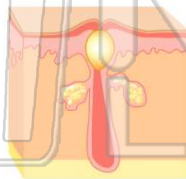
Please [Sign In](#) or [Sign Up](#) to download the printable version of this worksheet

- C warm, cool
- D cool, warm



**Acne** is \_\_\_\_\_.

- A a disease of the skin
- B a bacterial infection of the skin
- C when cells divide uncontrollably
- D way of cleaning the skin



(b)

\_\_\_\_\_ is when cells **divide uncontrollably**.

- A A bacterial infection
- B Cell disease
- C Cancer
- D Acne



(c)