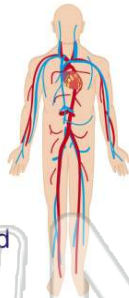




Name _____ Class _____ Date _____

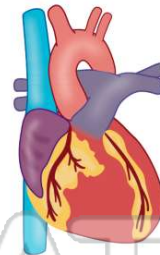
1 What is the **function** of the **circulatory system**?

A to help the legs move.
B to give the body support and shape
C to break down nutrients
D to transport oxygen in and wastes out of cells



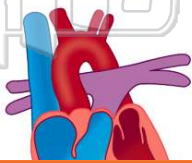
2 The **heart** is made of _____

A cardiac
B epithelial
C connective
D smooth



3 What structure **separates the right and left sides** of the heart?

A aorta
B septum
C valve
D ventricle



4 What is the **function** of a **heart valve**?

A to monitor how much blood is entering the heart
B to increase the flow of blood through the heart
C to prevent blood from flowing



PREVIEW

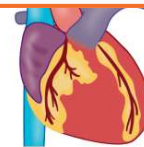
Please [Sign In](#) or [Sign Up](#) to download the printable version of this worksheet

7

A true
B false

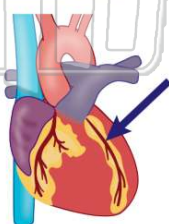


A aorta
C heart
D plasma



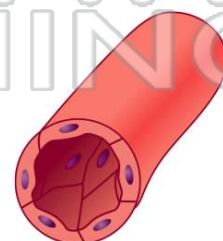
9 The **coronary arteries** bring oxygen to the _____ cells.

A muscle
B brain
C heart
D lung



10 How **thick** are the walls of **capillaries**?

A one cell
B three layers
C two layers
D two cells

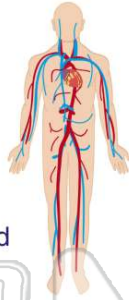




ANSWER KEY

What is the **function** of the **circulatory system**?

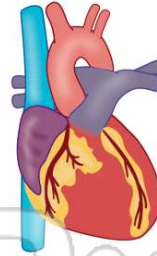
- A** to help the legs move.
- B** to give the body support and shape
- C** to break down nutrients
- D** to transport oxygen in and wastes out of cells



(d)

The **heart** is made of _____ **muscle**.

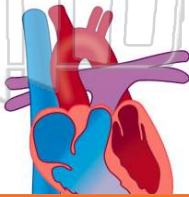
- A** cardiac
- B** epithelial
- C** connective
- D** smooth



(a)

What structure **separates** the **right and left sides** of the heart?

- A** aorta
- B** septum
- C** valve
- D** ventricle



(b)

What is the **function** of a **heart valve**?

- A** to monitor how much blood is entering the heart
- B** to increase the flow of blood through the heart
- C** to prevent blood from flowing backwards



(c)

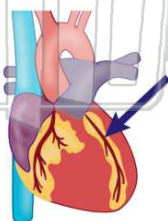


PREVIEW

Please [Sign In](#) or [Sign Up](#) to download the printable version of this worksheet

The **coronary arteries** bring oxygen to the _____ cells.

- A** muscle
- B** brain
- C** heart
- D** lung



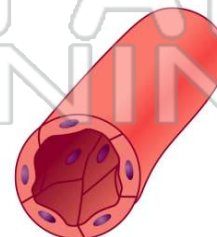
(c)

D plasma



How **thick** are the walls of **capillaries**?

- A** one cell
- B** three layers
- C** two layers
- D** two cells



(a)