



Name \_\_\_\_\_ Class \_\_\_\_\_ Date \_\_\_\_\_

1 Which is not a **component** of blood?

- A red blood cells
- B plasma
- C white blood cells
- D plates



2 **Over half** of the **blood** consists of \_\_\_\_\_.

- A red blood cells
- B plasma
- C white blood cells
- D platelets



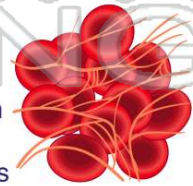
3 \_\_\_\_\_ is a **protein** in **red blood cells** that binds together with oxygen molecules.

- A Hemoglobin
- B Fibrin
- C Plasma



4 What is **fibrin**?

- A a protein the binds together with oxygen molecules
- B a protein that weaves a net that covers a cut



## PREVIEW

Please [Sign In](#) or [Sign Up](#) to download the printable version of this worksheet

7 \_\_\_\_\_ the body  
B bring oxygen to the cells  
C recover liquids from the blood  
D break down nutrients



bring the lymph back to the bloodstream.  
C the pump of the lymphatic system  
D structures that filter lymph



9 \_\_\_\_\_ is an **organism** that causes **disease**.

- A A pathogen
- B A phagocyte
- C An antigen
- D An antibody



10 An **infectious disease** is a disease that can be **spread** from one organism to another.

- A true
- B false





## ANSWER KEY

Which is not a **component** of blood?

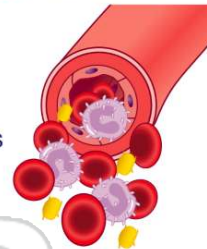
- A red blood cells
- B plasma
- C white blood cells
- D plates



(d)

**Over half** of the **blood** consists of

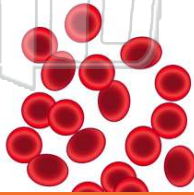
- A red blood cells
- B plasma
- C white blood cells
- D platelets



(b)

\_\_\_\_\_ is a **protein** in **red blood cells** that binds together with oxygen molecules.

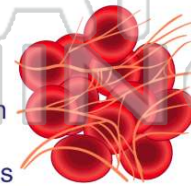
- A Hemoglobin
- B Fibrin
- C Plasma
- D Platelet



(a)

What is **fibrin**?

- A a protein the binds together with oxygen molecules
- B a protein that weaves a net that covers a cut
- C a cell fragment



(b)



## PREVIEW

Please [Sign In](#) or [Sign Up](#) to download the printable version of this worksheet

- C recover liquids from the blood
- D break down nutrients

- C the pump of the lymphatic system
- D structures that filter lymph

\_\_\_\_\_ is an **organism** that causes **disease**.

- A A pathogen
- B A phagocyte
- C An antigen
- D An antibody



(a)

An **infectious disease** is a disease that can be **spread** from one organism to another.

- A true
- B false



(a)