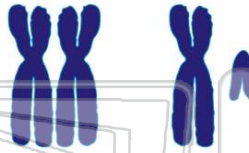




Name _____ Class _____ Date _____

1 The **sex chromosomes** carry genes that determine whether a person is **male or female**. They also carry genes that determine **other traits**.

- A true
- B false



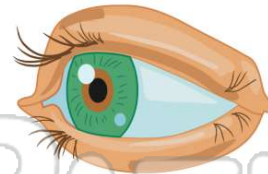
3 A _____ is person who has **one recessive** allele for a trait and **one dominant** allele.

- A carrier
- B gene
- C trait



2 The gene for **colorblindness** in humans is located on the _____ **chromosome**.

- A 21st
- B 18th
- C 4th
- D 23rd



4 If an organism has **16 chromosomes** in their body cells, **how many chromosomes** would their egg cells have?

- A 32
- B 8
- C 6



5



PREVIEW

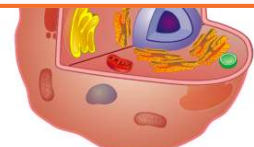
Please [Sign In](#) or [Sign Up](#) to download the printable version of this worksheet

7

- A true
- B false

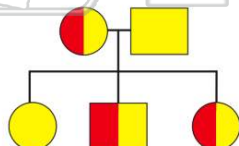


- B nucleus
- C lysosome
- D ribosome



9 A _____ is a **chart** or "**family tree**" that **geneticists** use to track members of a family that have a **specific trait**.

- A Punnett square
- B pedigree
- C karyotype
- D topographic map



10 Which **animal** made history by being the first mammal to be successfully **cloned**?

- A goat
- B cat
- C sheep
- D pig

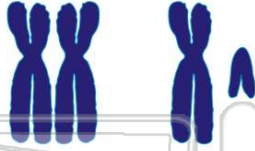




ANSWER KEY

The **sex chromosomes** carry genes that determine whether a person is **male or female**. They also carry genes that determine **other traits**.

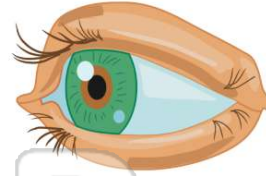
- A true
- B false



(a)

The gene for **colorblindness** in humans is located on the _____ chromosome.

- A 21st
- B 18th
- C 4th
- D 23rd



(d)

A _____ is person who has **one recessive** allele for a trait and **one dominant** allele.

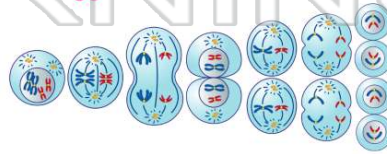
- A carrier
- B gene
- C trait
- D protein



(a)

If an organism has **16 chromosomes** in their body cells, **how many chromosomes** would their egg cells have?

- A 32
- B 8
- C 6
- D 12



(b)



PREVIEW

Please [Sign In](#) or [Sign Up](#) to download the printable version of this worksheet

- A true
- B false

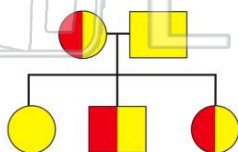


- C lysosome
- D ribosome



A _____ is a **chart** or "family tree" that **geneticists** use to track members of a family that have a **specific trait**.

- A Punnett square
- B pedigree
- C karyotype
- D topographic map



(b)

Which **animal** made history by being the first mammal to be successfully **cloned**?

- A goat
- B cat
- C sheep
- D pig



(c)