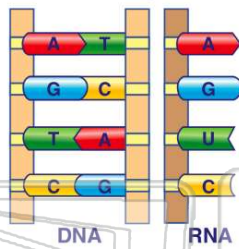




Name _____ Class _____ Date _____

1 RNA uses the **same** nitrogen bases as DNA.

- A true
- B false



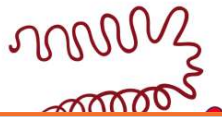
2 A cloned animal is genetically identical to **one parent**.

- A true
- B false



3 _____ is a process that uses **genetic engineering** to correct some genetic disorders in humans.

- A Inbreeding
- B Hybridization
- C Cloning



4 What is a **mutation**?

- A it is caused when toxic waste gets on your skin
- B a type of RNA
- C a change that takes place on a gene or a chromosome



PREVIEW

Please [Sign In](#) or [Sign Up](#) to download the printable version of this worksheet

7

property

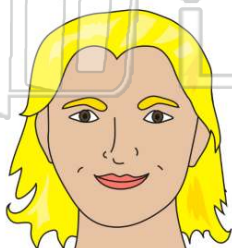
C an organism's color changes so it blends in with its environment better

D an organism's color changes so it doesn't blend in with its environment

- B traits that are controlled by two alleles
- C traits that are controlled by one allele
- D traits that are on many different genes

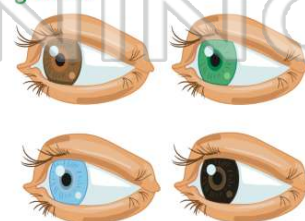
9 What **trait** is an example of **multiple alleles**?

- A height
- B widow's peak
- C dimples
- D eye color



10 Can a **trait** be controlled by many **different genes**?

- A yes
- B no

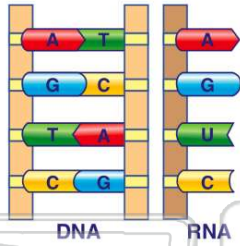




ANSWER KEY

RNA uses the **same** nitrogen bases as DNA.

- A true
- B false



(b)

A cloned animal is genetically identical to **one parent**.

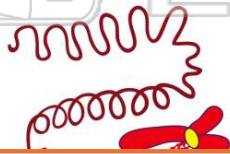
- A true
- B false



(a)

_____ is a process that uses **genetic engineering** to correct some genetic disorders in humans.

- A Inbreeding
- B Hybridization
- C Cloning
- D Gene therapy



(d)

What is a **mutation**?

- A it is caused when toxic waste gets on your skin
- B a type of RNA
- C a change that takes place on a gene or a chromosome
- D a type of disease

(c)



PREVIEW

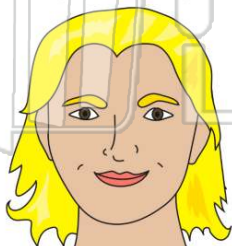
Please [Sign In](#) or [Sign Up](#) to download the printable version of this worksheet

- C an organism's color changes so it blends in with its environment better
- D an organism's color changes so it doesn't blend in with its environment

- C traits that are controlled by one allele
- D traits that are on many different genes

What **trait** is an example of **multiple alleles**?

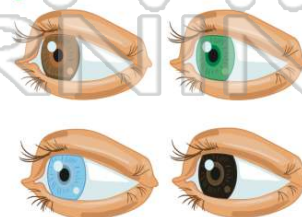
- A height
- B widow's peak
- C dimples
- D eye color



(d)

Can a **trait** be controlled by many **different genes**?

- A yes
- B no



(a)