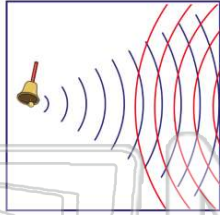




Name _____ Class _____ Date _____

1 When sound waves that are traveling from **opposite directions** meet, this is called _____.

- A amplitude
- B loudness
- C interference
- D combination



3 In the diagram below, a ship is using **sonar** to examine the ocean floor underneath it. The sonar waves **hit the ocean floor**, then are _____.

- A diffracted equally in all directions
- B reflected back to the ship



2 In the diagram below, a ship is directing **ultrasound waves** off the **ocean floor**. This ship is using _____.

- A radar
- B GPS
- C loud sound
- D sonar



4 The **loudness** of a **sound** depends upon which of the following?

- A the pitch of the sound and the distance from the sound
- B the temperature of the air and the distance from the sound
- C the humidity in the air and the distance



5



PREVIEW

Please [Sign In](#) or [Sign Up](#) to download the printable version of this worksheet

7

- B are much too loud
- C are faster than the speed of sound
- D have large wavelengths

- B dogs do not have earwax
- C dog ears can detect higher frequencies
- D dogs have better brains



9

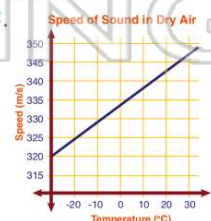
This picture shows a medical **machine** that uses sound waves to make **images** of what is **inside a patient's body**. This procedure is called a(n) _____ examination.

- A ultrasound
- B infrared
- C microscopic
- D telescopic



10 Using the graph below, determine **how fast** sound travels when the air temperature is **20°C**.

- A 340 m/s
- B 343 m/s
- C 350 m/s
- D 355 m/s

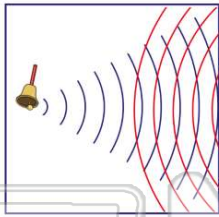




ANSWER KEY

When sound waves that are traveling from **opposite directions** meet, this is called _____.

- A amplitude
- B loudness
- C interference
- D combination



(C)

In the diagram below, a ship is directing **ultrasound waves** off the **ocean floor**. This ship is using _____.

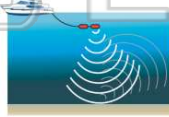
- A radar
- B GPS
- C loud sound
- D sonar



(d)

In the diagram below, a ship is using **sonar** to examine the ocean floor underneath it. The sonar waves **hit the ocean floor**, then are _____.

- A diffracted equally in all directions
- B reflected back to the ship
- C analyzed by underwater divers
- D



(b)

The **loudness** of a **sound** depends upon which of the following?

- A the pitch of the sound and the distance from the sound
- B the temperature of the air and the distance from the sound
- C the humidity in the air and the distance from the sound
- D the energy it took to make the sound and



(d)



PREVIEW

Please [Sign In](#) or [Sign Up](#) to download the printable version of this worksheet

D have large wavelengths

- C dog ears can detect higher frequencies
- D dogs have better brains



This picture shows a medical **machine** that uses sound waves to make **images** of what is **inside a patient's body**. This procedure is called a(n) _____ examination.

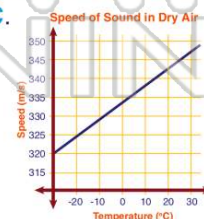
- A ultrasound
- B infrared
- C microscopic
- D telescopic



(a)

Using the graph below, determine **how fast** sound travels when the air temperature is **20°C**.

- A 340 m/s
- B 343 m/s
- C 350 m/s
- D 355 m/s



(b)