

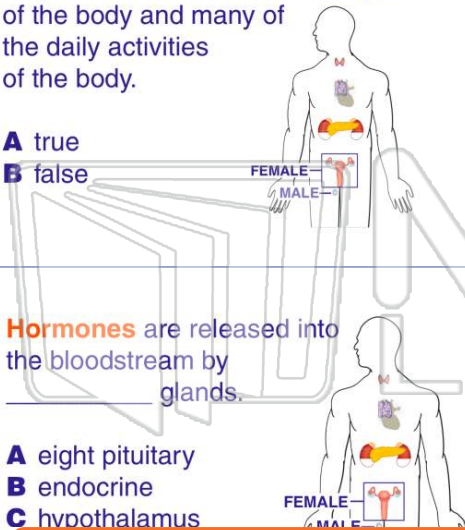


The endocrine system and Reproduction

Name _____ Class _____ Date _____

1 The **endocrine system** controls long-term and short-term changes of the body and many of the daily activities of the body.

- A true
- B false

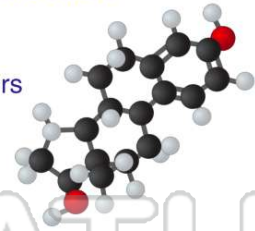


3 **Hormones** are released into the bloodstream by _____ glands.

- A eight pituitary
- B endocrine
- C hypothalamus

2 The **chemicals** created by the **endocrine system** are called _____.

- A neurotransmitters
- B proteins
- C hormones
- D carbohydrates



4 The **hormones** are in **control** of _____.

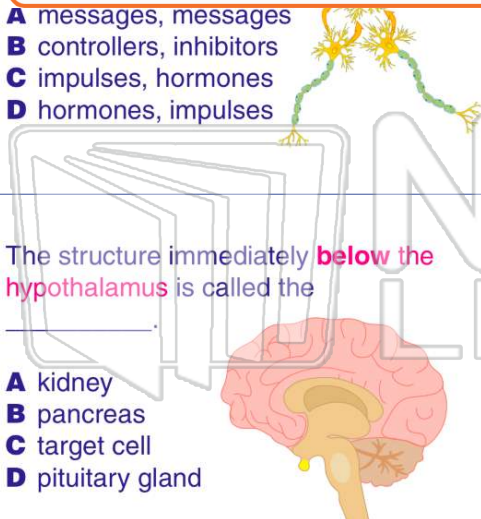
- A the brain
- B the nervous system
- C the functions of the body
- D releasing chemicals



PREVIEW

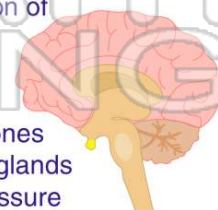
Please [Sign In](#) or [Sign Up](#) to download the printable version of this worksheet

8 _____ and the endocrine system together.
B It secretes thalamus into the brain.
C It links the digestive system and the endocrine system together.
D It makes all of the hormones in the body.



10 Which is **not** a function of the **pituitary gland**?

- A regulate growth
- B release sex hormones
- C control endocrine glands
- D regulate blood pressure

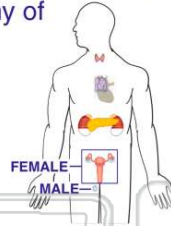




ANSWER KEY

The **endocrine system** controls long-term and short-term changes of the body and many of the daily activities of the body.

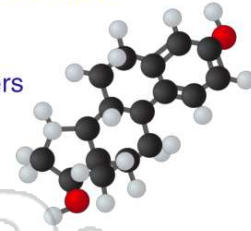
- A true
- B false



(a)

The **chemicals** created by the **endocrine system** are called _____.

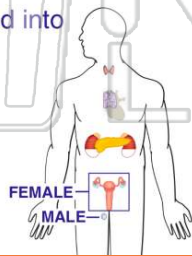
- A neurotransmitters
- B proteins
- C hormones
- D carbohydrates



(c)

Hormones are released into the bloodstream by _____ glands.

- A eight pituitary
- B endocrine
- C hypothalamus
- D sweat



(b)

The **hormones** are in **control** of _____.

- A the brain
- B the nervous system
- C the functions of the body
- D releasing chemicals



(c)

PREVIEW

Please [Sign In](#) or [Sign Up](#) to download the printable version of this worksheet

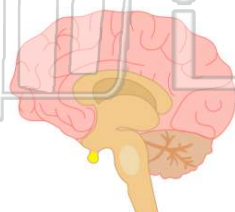
- B controllers, inhibitors
- C impulses, hormones
- D hormones, impulses



- B It secretes thalamus into the brain.
- C It links the digestive system and the endocrine system together.
- D It makes all of the hormones in the body.

The structure immediately **below the hypothalamus** is called the _____.

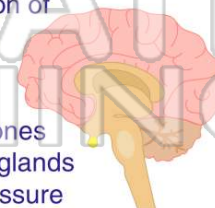
- A kidney
- B pancreas
- C target cell
- D pituitary gland



(d)

Which is **not** a function of the **pituitary gland**?

- A regulate growth
- B release sex hormones
- C control endocrine glands
- D regulate blood pressure



(b)