

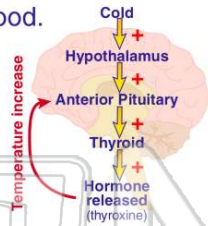


The endocrine system and Reproduction

Name _____ Class _____ Date _____

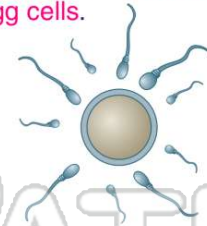
1 _____ is a system used by the endocrine system to **control the levels of hormones** in the blood.

- A Negative feedback
- B Positive feedback
- C Neutral feedback
- D Feedback



2 The **male reproductive system** is specialized to produce the **estrogen** hormone and **egg cells**.

- A true
- B false



3 Which structure(s) of the male reproductive system produces **testosterone**?

- A scrotum
- B urethra
- C testes
- D vas deferens



4 What are **two structures** of a **sperm cell**?

- A head and tail
- B head and foot
- C tail and egg
- D tail and thorax

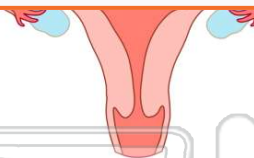


PREVIEW

Please [Sign In](#) or [Sign Up](#) to download the printable version of this worksheet

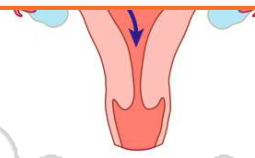
7 _____

- A oviducts
- B uterus
- C ovaries
- D vagina



8 _____

- B uterus
- C ovaries
- D vagina



9 The _____ is a **muscular organ** of the female reproductive system that leads to the outside of the body.

- A oviducts
- B uterus
- C ovaries
- D vagina



10 The **menstrual cycle** starts when the _____

- A uterin walls thicken
- B egg is released from the ovaries
- C egg is fertilized
- D egg begins to mature in the ovaries

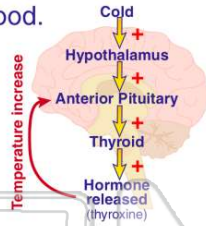




ANSWER KEY

_____ is a system used by the endocrine system to **control the levels of hormones** in the blood.

- A Negative feedback
- B Positive feedback
- C Neutral feedback
- D Feedback



(a)

The **male reproductive system** is specialized to produce the **estrogen** hormone and **egg cells**.

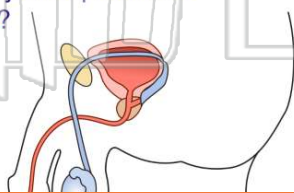
- A true
- B false



(b)

Which structure(s) of the male reproductive system produces **testosterone**?

- A scrotum
- B urethra
- C testes
- D penis



(c)

What are **two structures** of a **sperm cell**?

- A head and tail
- B head and foot
- C tail and egg
- D tail and thorax



(a)



PREVIEW

Please [Sign In](#) or [Sign Up](#) to download the printable version of this worksheet

- A uterus
- B ovaries
- C vagina

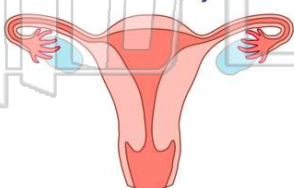


- C ovaries
- D vagina



The _____ is a **muscular organ** of the female reproductive system that leads to the outside of the body.

- A oviducts
- B uterus
- C ovaries
- D vagina



(d)

The **menstrual cycle** starts when the _____

- A uterin walls thicken
- B egg is released from the ovaries
- C egg is fertilized
- D egg begins to mature in the ovaries



(d)