

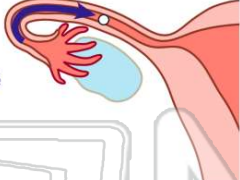


The endocrine system and Reproduction

Name _____ Class _____ Date _____

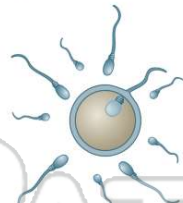
1 In a **process** called _____, the **egg is released** from the ovary into the oviduct.

A menstruation
B menstrual cycle
C ovulation
D ovaries




2 During **ovulation**, the egg may be **fertilized** by a sperm cell.

A true
B false




3 If the egg is **fertilized**, both the egg and the lining of the uterus will begin breaking down and pass through the vagina in a process called **menstruation**.

A true
B false



4 The **fluid-filled membrane** that surrounds an embryo after fertilization is called _____.

A placenta
B zygote
C amniotic sac



5



PREVIEW

Please [Sign In](#) or [Sign Up](#) to download the printable version of this worksheet

7

A the umbilical cord
B a puberty
C the placenta
D the amniotic sac




A pregnancy
B afterbirth
C delivery
D labor




9 During **infancy**, the child is able to perform many of its daily functions on its own.

A true
B false



10 Which **process** occurs at the beginning of **adolescence**?

A childhood
B infancy
C placenta
D puberty

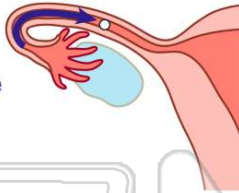




ANSWER KEY

In a **process** called _____, the **egg is released** from the ovary into the oviduct.

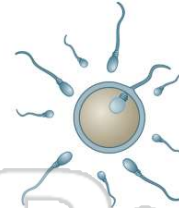
- A menstruation
- B menstrual cycle
- C ovulation
- D ovaries



(C)

During **ovulation**, the egg may be **fertilized** by a sperm cell.

- A true
- B false



(a)

If the egg is **fertilized**, both the egg and the lining of the uterus will begin breaking down and pass through the vagina in a process called **menstruation**.

- A true
- B false



(b)

The **fluid-filled membrane** that surrounds an embryo after fertilization is called _____.

- A placenta
- B zygote
- C amniotic sac
- D fetus



(C)

PREVIEW

Please [Sign In](#) or [Sign Up](#) to download the printable version of this worksheet

- A a puberty
- B the placenta
- C the amniotic sac
- D labor



- A a puberty
- B the placenta
- C the amniotic sac
- D labor



During **infancy**, the child is able to perform many of its daily functions on its own.

- A true
- B false



(b)

Which **process** occurs at the beginning of **adolescence**?

- A childhood
- B infancy
- C placenta
- D puberty



(d)