



Name _____ Class _____ Date _____

1 What was **different about the finches** on the different islands of the Galápagos Islands?

- A their wing span
- B their mating habits
- C their beak size and shape
- D their eggs



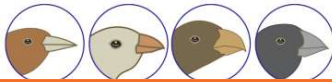
2 What did Charles Darwin say caused the **adaptation of different beaks** between finch species on the Galápagos islands?

- A the type of nest they made
- B the food that they ate
- C the mating habits
- D the type of trees on the island



3 Darwin observed that finches developed **beaks of different sizes and shapes** because of the food they ate. This development is called _____.

- A growth
- B change



4 **Evolution** is the passing of a trait that is favored by the environment that helps a species to survive and reproduce.

- A true
- B false



5



PREVIEW

Please [Sign In](#) or [Sign Up](#) to download the printable version of this worksheet

individuals within the same species.

- A true
- B false

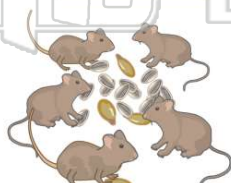


- B Overproduction
- C Adaptation
- D Evolution



9 Organisms of the same species all seek the same **limited resources**. This term for this is _____.

- A adaptation
- B evolution
- C competition
- D defeat



10 Can two species **coexist** in the same environment if they have the **same food** source?

- A yes
- B no





ANSWER KEY

What was **different about the finches** on the different islands of the Galápagos Islands?

- A their wing span
- B their mating habits
- C their beak size and shape
- D their eggs



(C)

What did Charles Darwin say caused the **adaptation of different beaks** between finch species on the Galápagos islands?

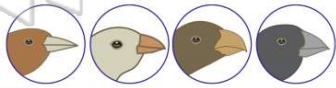
- A the type of nest they made
- B the food that they ate
- C the mating habits
- D the type of trees on the island



(b)

Darwin observed that finches developed **beaks of different sizes and shapes** because of the food they ate. This development is called

- A growth
- B change
- C adaptation
- D



(C)

Evolution is the passing of a trait that is favored by the environment that helps a species to survive and reproduce.

- A true
- B false



(b)



PREVIEW

Please [Sign In](#) or [Sign Up](#) to download the printable version of this worksheet

Same species.

- A true
- B false



- C Adaptation
- D Evolution



Organisms of the same species all seek the same **limited resources**. This term for this is

- A adaptation
- B evolution
- C competition
- D defeat



(C)

Can two species **coexist** in the same environment if they have the **same food** source?

- A yes
- B no



(a)