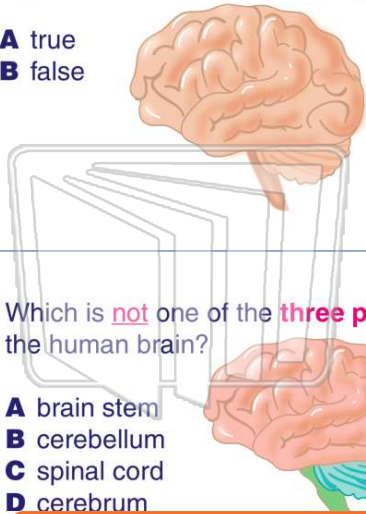




Name _____ Class _____ Date _____

1 The **brain** and the **spinal cord** are organs of the **central nervous system**.

- A true
- B false



3 Which is **not** one of the **three parts** of the human brain?

- A brain stem
- B cerebellum
- C spinal cord
- D cerebrum

2 Which is **not** a **function** of the **spinal cord**?

- A bringing information to the brain
- B interpreting all of the nerve impulses
- C bringing information to the rest of the body
- D attaching the central and peripheral nervous system

4 The type of **neuron** that is in the **brain** is _____.

- A sensory neuron
- B interneuron
- C physical neuron
- D motor neuron



5



PREVIEW

Please [Sign In](#) or [Sign Up](#) to download the printable version of this worksheet

7

- _____ muscles
- B to transport nerve impulses from the arms and legs
- C to help keep your balance
- D to control involuntary muscles

- B to transport nerve impulses from the arms and legs
- C to help keep your balance
- D to control involuntary muscles

9

The central nervous system branches out from the **peripheral nervous system**.

- A true
- B false



10

Which are the **two parts** of the **peripheral nervous system**?

- A somatic and dramatic
- B automatic and manual
- C somatic and automatic
- D manual and dramatic



ANSWER KEY

The **brain** and the **spinal cord** are organs of the **central nervous system**.

- A true
- B false



(a)

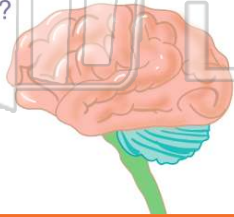
Which is not a **function** of the **spinal cord**?

- A bringing information to the brain
- B interpreting all of the nerve impulses
- C bringing information to the rest of the body
- D attaching the central and peripheral nervous system

(b)

Which is not one of the **three parts** of the human brain?

- A brain stem
- B cerebellum
- C spinal cord
- D cerebrum



(c)

The type of **neuron** that is in the **brain** is _____.

- A sensory neuron
- B interneuron
- C physical neuron
- D motor neuron



(b)



PREVIEW

Please [Sign In](#) or [Sign Up](#) to download the printable version of this worksheet

- B to transport nerve impulses from the arms and legs
- C to help keep your balance
- D to control involuntary muscles

- from the arms and legs
- C to help keep your balance
- D to control involuntary muscles

The central nervous system branches out from the **peripheral nervous system**.

- A true
- B false



(b)

Which are the **two parts** of the **peripheral nervous system**?

- A somatic and dramatic
- B automatic and manual
- C somatic and automatic
- D manual and dramatic

(c)