



Name \_\_\_\_\_ Class \_\_\_\_\_ Date \_\_\_\_\_

1 What **structure** of the nervous system **controls reflexes** that occur automatically?

- A peripheral nervous system
- B brain
- C spinal cord
- D notochord



3 The \_\_\_\_\_ is a **snail-shaped tube** within the ear that is filled with fluid and hair-like receptors.

- A cochlea
- B eardrum
- C semicircular canal



2 What structure picks up **sound vibrations** within the ear?

- A ear lobe
- B eardrum
- C semicircular canals
- D cornea



4 What **structure** gives an individual their **sense of balance**?

- A cochlea
- B eardrum
- C semicircular canals
- D cornea

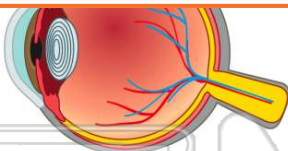


## PREVIEW

Please [Sign In](#) or [Sign Up](#) to download the printable version of this worksheet

7

- A pupil
- B retina
- C cornea
- D lens

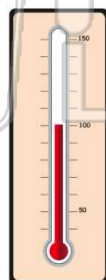


- A bitter
- B salty
- C sour
- D chewy



9 Which **sense** picks up the **changes in temperature** within the environment?

- A taste
- B sight
- C touch
- D balance



10 Without our **senses**, we would **not** be able to **describe our environment**.

- A true
- B false

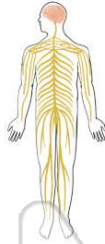




## ANSWER KEY

What **structure** of the nervous system **controls reflexes** that occur automatically?

- A peripheral nervous system
- B brain
- C spinal cord
- D notochord



(C)

What structure picks up **sound vibrations** within the ear?

- A ear lobe
- B eardrum
- C semicircular canals
- D cornea



(b)

The \_\_\_\_\_ is a **snail-shaped tube** within the ear that is filled with fluid and hair-like receptors.

- A cochlea
- B eardrum
- C semicircular canal
- D cornea



(a)

What **structure** gives an individual their **sense of balance**?

- A cochlea
- B eardrum
- C semicircular canals
- D cornea



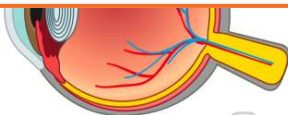
(C)



## PREVIEW

Please [Sign In](#) or [Sign Up](#) to download the printable version of this worksheet

- B retina
- C cornea
- D lens

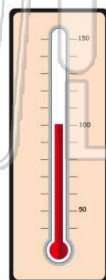


- B salty
- C sour
- D chewy



Which **sense** picks up the **changes in temperature** within the environment?

- A taste
- B sight
- C touch
- D balance



(C)

Without our **senses**, we would **not** be able to **describe our environment**.

- A true
- B false



(a)