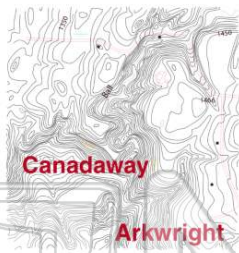




Name _____ Class _____ Date _____

1 This is a _____.

- A road map
- B bus route map
- C topographic map
- D products map



2 Albany is _____ of Buffalo.

- A west
- B east
- C north
- D southwest



3 If you live in Virginia and want to travel to California to see the Pacific Ocean, which direction will you have to go?

- A north
- B south
- C west



4 Latitude lines run east and west.

- A true
- B false



5



PREVIEW

Please [Sign In](#) or [Sign Up](#) to download the printable version of this worksheet

7



- each political party
- B how many state parks there are
- C how many restaurants there are
- D the shoe size of each candidate



9 Latitude lines run parallel to the _____.

- A longitude lines
- B lake lines
- C Equator
- D topographic lines



10 If you were to see this illustration in a map legend, what would you expect it to represent?

- A hot spring
- B National Park
- C swimming pool
- D ski resort

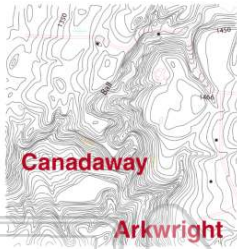




ANSWER KEY

This is a _____.

- A road map
- B bus route map
- C topographic map
- D products map



(C)

Albany is _____ of Buffalo.

- A west
- B east
- C north
- D southwest



(b)

If you live in Virginia and want to travel to California to see the Pacific Ocean, which direction will you have to go?

- A north
- B south
- C west
- D east



(C)

Latitude lines run east and west.

- A true
- B false



(a)



PREVIEW

Please [Sign In](#) or [Sign Up](#) to download the printable version of this worksheet

Latitude lines run parallel to the _____.

- A longitude lines
- B lake lines
- C Equator
- D topographic lines



(C)

If you were to see this illustration in a map legend, what would you expect it to represent?

- A hot spring
- B National Park
- C swimming pool
- D ski resort



(d)