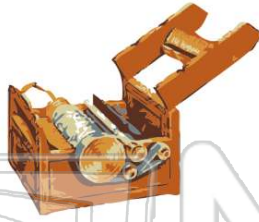




Name \_\_\_\_\_ Class \_\_\_\_\_ Date \_\_\_\_\_

1 A **machine** invented to **remove the seeds from cotton** was the \_\_\_\_\_.

- A cotton gin
- B assembly line
- C loom
- D needle



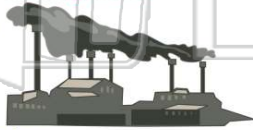
2 The **inventor** of the **cotton gin** was \_\_\_\_\_.

- A Henry Ford
- B George Washington Carver
- C Eli Whitney
- D Benjamin Franklin



3 The **process** of **making items one at a time** is called \_\_\_\_\_.

- A factory production
- B unit production



4 The **process** of **making products in large numbers** is called \_\_\_\_\_.

- A mass production
- B number production



5



## PREVIEW

Please [Sign In](#) or [Sign Up](#) to download the printable version of this worksheet

7

- A gas
- B oil
- C water
- D coal

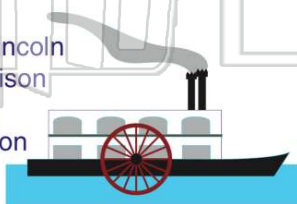


- A James Madison
- C Molly Pitcher
- D Napoleon



9 Who **invented** the **first successful steamboat**?

- A Abraham Lincoln
- B Dolley Madison
- C Eli Whitney
- D Robert Fulton



10 A steam-powered locomotive called the **Tom Thumb** was invented by \_\_\_\_\_.

- A William Penn
- B Peter Cooper
- C William Bradford
- D Henry Hudson





## ANSWER KEY

A **machine** invented to **remove the seeds from cotton** was the \_\_\_\_\_.

- A** cotton gin
- B** assembly line
- C** loom
- D** needle



(a)

The **inventor** of the **cotton gin** was \_\_\_\_\_.

- A** Henry Ford
- B** George Washington Carver
- C** Eli Whitney
- D** Benjamin Franklin



(c)

The **process** of **making items one at a time** is called \_\_\_\_\_.

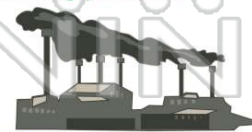
- A** factory production
- B** unit production
- C** machine production
- D** \_\_\_\_\_



(b)

The **process** of **making products in large numbers** is called \_\_\_\_\_.

- A** mass production
- B** number production
- C** home production
- D** \_\_\_\_\_



(a)



## PREVIEW

Please [Sign In](#) or [Sign Up](#) to download the printable version of this worksheet

- C** water
- D** coal



- D** Napoleon



Who **invented** the **first successful steamboat**?

- A** Abraham Lincoln
- B** Dolley Madison
- C** Eli Whitney
- D** Robert Fulton



(d)

A steam-powered locomotive called the **Tom Thumb** was invented by \_\_\_\_\_.

- A** William Penn
- B** Peter Cooper
- C** William Bradford
- D** Henry Hudson



(b)