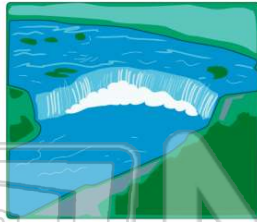




Name _____ Class _____ Date _____

1 The **world-famous waterfall** in western New York is _____.

- A Victoria Falls
- B Yosemite Falls
- C Angel Falls
- D Niagara Falls



2 What **river** flows **north** from Pennsylvania through Rochester to Lake Ontario?

- A Ohio River
- B Colorado River
- C Genesee River
- D New River



3 The **Delaware River** forms **part of the border** between New York State and Canada.

- A true
- B false



4 What **river** in New York State flows from **Lake Ontario** to the **Atlantic Ocean**?

- A East River
- B Rio Grande
- C American River
- D St. Lawrence River

5



PREVIEW

7 Please [Sign In](#) or [Sign Up](#) to download the printable version of this worksheet

- B Great Salt Lake
- C Lake Worth
- D Lake Champlain



- A Rio Grande
- B Mohawk River
- C Amazon River
- D Colorado River

9 Name the **New York State river** that flows **south** from the Adirondack Mountains to the Atlantic Ocean.

- A Sacramento River
- B Ohio River
- C Hudson River
- D Mississippi River



10 **Lake Placid**, where the **Olympics** were held twice, is located in the _____.

- A Sierra Nevada Mountains
- B Andes Mountains
- C White Mountains
- D Adirondack Mountains

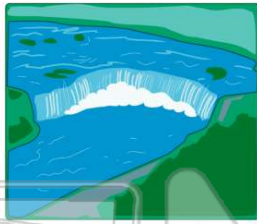




ANSWER KEY

The **world-famous waterfall** in western New York is _____.

- A** Victoria Falls
- B** Yosemite Falls
- C** Angel Falls
- D** Niagara Falls



(d)

What **river** flows **north** from Pennsylvania through Rochester to Lake Ontario?

- A** Ohio River
- B** Colorado River
- C** Genesee River
- D** New River



(c)

The **Delaware River** forms **part of the border** between New York State and Canada.

- A** true
- B** false



(b)

What **river** in New York State flows from **Lake Ontario** to the **Atlantic Ocean**?

- A** East River
- B** Rio Grande
- C** American River
- D** St. Lawrence River

(d)



PREVIEW

Please [Sign In](#) or [Sign Up](#) to download the printable version of this worksheet

- C** Lake worth
- D** Lake Champlain



- A** Rio Grande
- B** Mohawk River
- C** Amazon River
- D** Colorado River

Name the **New York State river** that flows **south** from the Adirondack Mountains to the Atlantic Ocean.

- A** Sacramento River
- B** Ohio River
- C** Hudson River
- D** Mississippi River



(c)

Lake Placid, where the **Olympics** were held twice, is located in the _____.

- A** Sierra Nevada Mountains
- B** Andes Mountains
- C** White Mountains
- D** Adirondack Mountains



(d)