



Name _____ Class _____ Date _____

1 The **Grand Coulee Dam** on the Columbia River in Washington produces water power, also called _____.



- A oil power
- B natural gas
- C hydroelectricity
- D propane

2 People are able to farm in **dry parts** of the Western Region because a **method of watering**, called _____, is used.

- A vegetation
- B irrigation
- C excavation
- D invitation



3 Valuable minerals like **gold, silver, and _____** are found in the **Western Region**.

- A copper
- B sap
- C cider
- D juice



4 **Yellowstone National Park** in Wyoming is known for its erupting hot springs, such as **Old Faithful**. These eruptions are called _____.

- A valleys
- B deltas



5

T
W
G
A
E
C
D



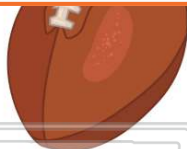
PREVIEW

Please [Sign In](#) or [Sign Up](#) to download the printable version of this worksheet

7

T
th

- A
- B Dallas
- C Buffalo
- D St. Louis



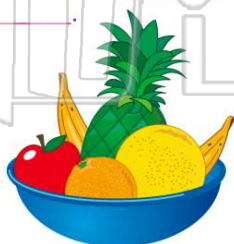
- B silver
- C wood
- D gold



9

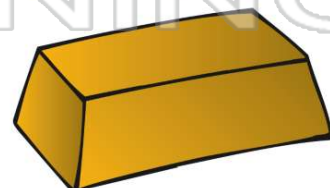
Important crops in **Hawaii** are **sugarcane, papaya, and _____**.

- A apples
- B pineapples
- C strawberries
- D tomatoes



10 **Alaska** has a **strong economy** based on tourism and its **abundant natural resources** like oil, gold, and natural gas.

- A true
- B false





ANSWER KEY

The **Grand Coulee Dam** on the Columbia River in Washington produces water power, also called _____.



- A oil power
- B natural gas
- C hydroelectricity
- D propane

(c)

People are able to farm in **dry parts** of the Western Region because a **method of watering**, called _____, is used.



- A vegetation
- B irrigation
- C excavation
- D invitation

(b)

Valuable minerals like **gold, silver, and** _____ are found in the **Western Region**.



- A copper
- B sap
- C cider
- D juice

(a)

Yellowstone National Park in Wyoming is known for its erupting hot springs, such as **Old Faithful**. These eruptions are called _____.



- A valleys
- B deltas
- C volcanoes

(d)



PREVIEW

Please [Sign In](#) or [Sign Up](#) to download the printable version of this worksheet

- C Buffalo
- D St. Louis

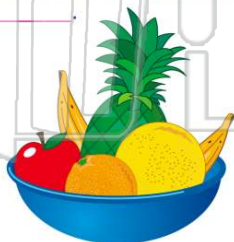


- C wood
- D gold



Important crops in **Hawaii** are **sugarcane, papaya, and** _____.

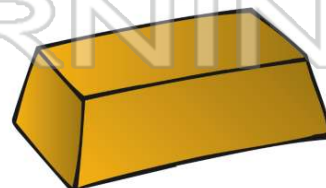
- A apples
- B pineapples
- C strawberries
- D tomatoes



(b)

Alaska has a **strong economy** based on tourism and its **abundant natural resources** like oil, gold, and natural gas.

- A true
- B false



(a)