



Name \_\_\_\_\_ Class \_\_\_\_\_ Date \_\_\_\_\_

1 A \_\_\_\_\_ shows the **relationship between two variables**.

**A** axis plot  
**B** map  
**C** KWL chart  
**D** scatter graph

2 The earliest globe on record is still around today. It is estimated to have been made in \_\_\_\_\_.

**A** 3000 B.C.  
**B** 150 B.C.  
**C** A.D. 1000  
**D** A.D. 1215



3 A globe's scale is most likely \_\_\_\_\_.

**A** 6:1  
**B** 1:6  
**C** 40,000,000:1  
**D** 1:40,000,000



4 **Raised relief** on a globe or map is known as \_\_\_\_\_.

**A** geography  
**B** topography  
**C** scatter graphing  
**D** parallels



Please [Sign In](#) or [Sign Up](#) to download the printable version of this worksheet

7

**B** elevation  
**C** geographic boundaries  
**D** the White House



**B** models  
**C** longitudes  
**D** isolines



9 Patterns of **migration** can be mapped by looking at religious, cultural, political and economical history.  
 True or false?  
**A** true  
**B** false



10 Satellite images are always produced in **black and white**.  
 True or false?  
**A** true  
**B** false





## ANSWER KEY

A \_\_\_\_\_ shows the **relationship between two variables**.

- A axis plot
- B map
- C KWL chart
- D scatter graph

(d)

The earliest globe on record is still around today. It is estimated to have been made in \_\_\_\_\_.

- A 3000 B.C.
- B 150 B.C.
- C A.D. 1000
- D A.D. 1215



(b)

A globe's **scale** is most likely \_\_\_\_\_

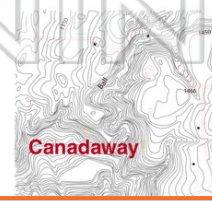
- A 6:1
- B 1:6
- C 40,000,000:1
- D 1:40,000,000

(d)



**Raised relief** on a globe or map is known as \_\_\_\_\_

- A geography
- B topography
- C scatter graphing
- D parallels



(b)



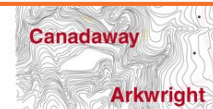
## PREVIEW

Please [Sign In](#) or [Sign Up](#) to download the printable version of this worksheet

- C geographic boundaries
- D the White House



- D isolines



Patterns of **migration** can be mapped by looking at religious, cultural, political and economical history.

True or false?

- A true
- B false

(a)



Satellite images are always produced in **black and white**.

True or false?

- A true
- B false

(b)

