



Name _____ Class _____ Date _____

1 Which of the following was the main **language** of the **Incan Empire**?

- A Spanish
- B Panzaleo
- C Quechua
- D Lule



2 Approximately how many **miles** did the **Incan road system** cover?

- A 100
- B 50,000
- C 12,000
- D 20,000



3 What were the **hereditary leaders** of the **Incan Empire** called?

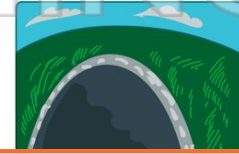
- A Pacarina
- B Sapa Inca
- C Machu Picchu
- D Quinoa



4 The Inca used both **tunnels** and **bridges** in their road system.

True or false?

- A true
- B false



PREVIEW

Please [Sign In](#) or [Sign Up](#) to download the printable version of this worksheet

- 7
- A Pizarro
 - B Cortes
 - C Capac
 - D Atahualpa

- B Pizarro
- C Cortes
- D Sapa



9 When did the Incan Empire **end**?

- A 1598
- B 1515
- C 1535
- D 1623

10 Who **took over** the Incan Territory in the **16th century**?

- A Great Britain
- B Mexico
- C America
- D Spain





ANSWER KEY

Which of the following was the main **language** of the **Incan Empire**?

- A Spanish
- B Panzaleo
- C Quechua
- D Lule



(C)

Approximately how many **miles** did the **Incan road system** cover?

- A 100
- B 50,000
- C 12,000
- D 20,000



(d)

What were the **hereditary leaders** of the **Incan Empire** called?

- A Pacarina
- B Sapa Inca
- C Machu Picchu
- D Quinoa

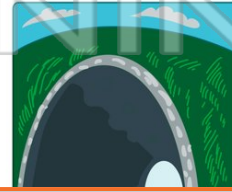


(b)

The Inca used both **tunnels** and **bridges** in their road system.

True or false?

- A true
- B false



(a)



PREVIEW

Please [Sign In](#) or [Sign Up](#) to download the printable version of this worksheet

D Atahualpa

D Sapa



When did the Incan Empire **end**?

- A 1598
- B 1515
- C 1535
- D 1623

(C)

Who **took over** the Incan Territory in the **16th century**?

- A Great Britain
- B Mexico
- C America
- D Spain

(d)

