



The Renaissance in Europe

SS
G

Name _____ Class _____ Date _____

1 **Latin** was a language studied by many people during the Renaissance.

True or false?

- A true
- B false



2 The plan to **convert Spain** to a Catholic nation is called the _____.

- A Acquisition
- B Enlightenment
- C Reconquest
- D Hundred Years War



3 What is the name of the method used by **painters** of the Renaissance to **show depth**?

- A sculpture
- B aesthetics
- C perspective



4 **Humanism** is closely associated with _____.

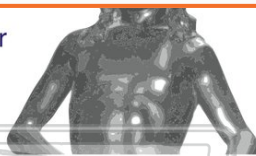
- A Judaism
- B Catholicism
- C feudalism
- D individualism



PREVIEW

Please [Sign In](#) or [Sign Up](#) to download the printable version of this worksheet

7



- A true
- B false

9 **Who** wrote *The Divine Comedy*?

- A Medici
- B Machiavelli
- C Dante
- D da Vinci



10 The ideas and works of the Renaissance were spread thanks to the **invention** of the _____.

- A feudal society
- B alphabet
- C printing press
- D railroad





ANSWER KEY

Latin was a language studied by many people during the Renaissance.

True or false?

- A true
- B false



(a)

The plan to **convert Spain** to a Catholic nation is called the _____.

- A Acquisition
- B Enlightenment
- C Reconquest
- D Hundred Years War



(c)

What is the name of the method used by **painters** of the Renaissance to **show depth**?

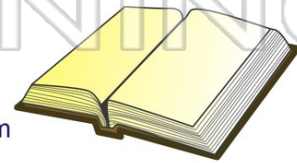
- A sculpture
- B aesthetics
- C perspective
- D scaffolding



(c)

Humanism is closely associated with _____.

- A Judaism
- B Catholicism
- C feudalism
- D individualism



(d)



PREVIEW

Please [Sign In](#) or [Sign Up](#) to download the printable version of this worksheet

Who wrote *The Divine Comedy*?

- A Medici
- B Machiavelli
- C Dante
- D da Vinci



(c)

The ideas and works of the Renaissance were spread thanks to the **invention** of the _____.

- A feudal society
- B alphabet
- C printing press
- D railroad



(c)