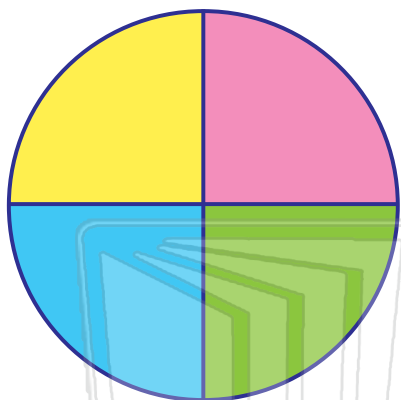




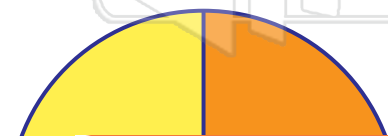
Name _____ Class _____ Date _____



How much of the circle is pink? Write the answer as a fraction. _____

How much of the circle is blue? Write the answer as a percent. _____

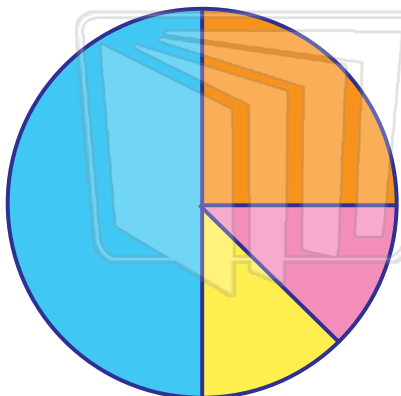
How much of the circle is not green? Write the answer as a fraction. _____



How much of the circle is yellow? Write the answer as a fraction. _____

PREVIEW

Please [Sign In](#) or [Sign Up](#) to download the printable version of this worksheet



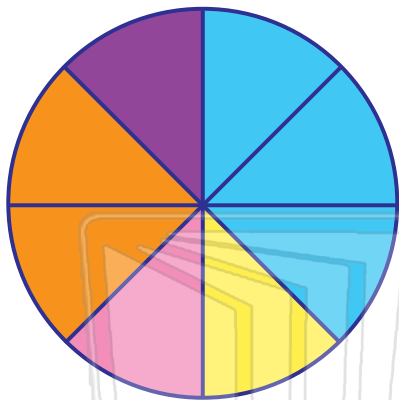
How much of the circle is blue? Write the answer as a percent. _____

How much of the circle is pink? Write the answer as a fraction. _____

How much of the circle is orange? Write the answer as a percent. _____



Name _____ Class _____ Date _____



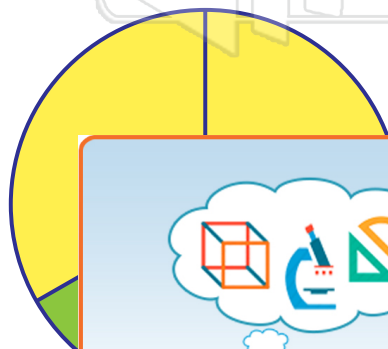
How much of the circle is **purple**?

Write the answer as a fraction. _____

How much of the circle is **blue**? Write the answer as a fraction. _____

How much of the circle is **orange**?

Write the answer as a percent. _____



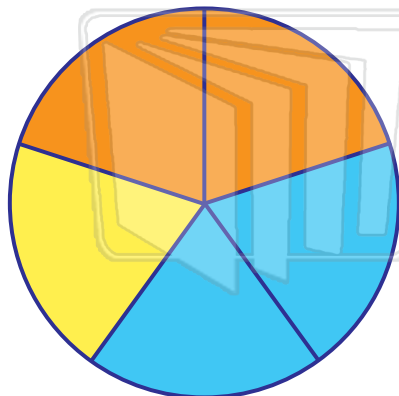
How much of the circle is **yellow**?

Write the answer as a fraction. _____



PREVIEW

Please [Sign In](#) or [Sign Up](#) to download the printable version of this worksheet



How much of the circle is **blue**? Write the answer as a fraction. _____

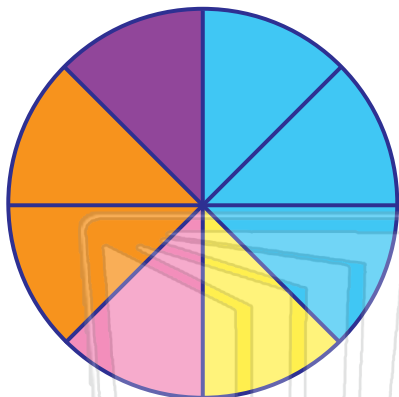
How much of the circle is **blue**? Write the answer as a percent. _____

How much of the circle is **yellow**?

Write the answer as a fraction. _____



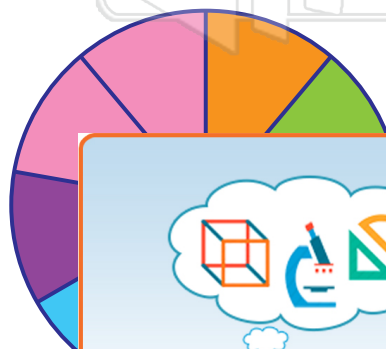
Name _____ Class _____ Date _____



How much of the circle is orange?
Write the answer as a percent. _____

How much of the circle is yellow?
Write the answer as a fraction. _____

How much of the circle is blue? Write
the answer as a fraction. _____

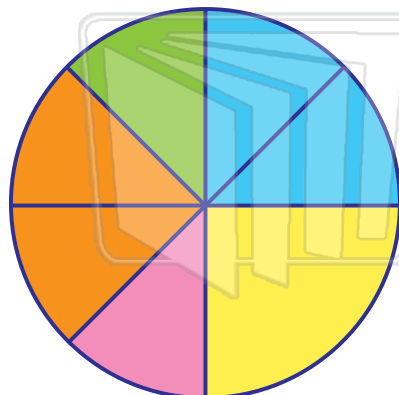


How much of the circle is pink? Write
the answer as a fraction. _____



PREVIEW

Please [Sign In](#) or [Sign Up](#) to download
the printable version of this worksheet



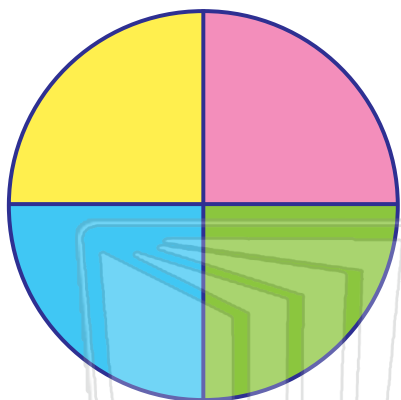
How much of the circle is yellow?
Write the answer as a percent. _____

How much of the circle is green? Write
the answer as a fraction. _____

How much of the circle is orange?
Write the answer as a fraction. _____



Name _____ Class _____ Date _____



How much of the circle is pink? Write the answer as a fraction.

1/4

How much of the circle is blue? Write the answer as a percent.

25%

How much of the circle is not green? Write the answer as a fraction.

3/4



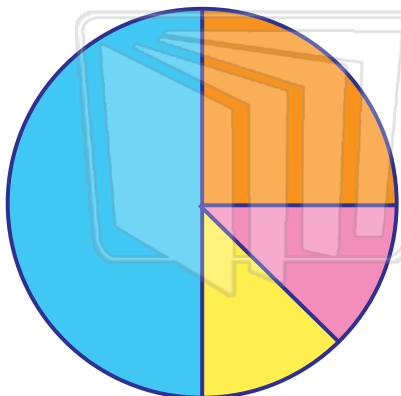
How much of the circle is yellow? Write the answer as a fraction.

1/2



PREVIEW

Please [Sign In](#) or [Sign Up](#) to download the printable version of this worksheet



How much of the circle is blue? Write the answer as a percent.

50%

How much of the circle is pink? Write the answer as a fraction.

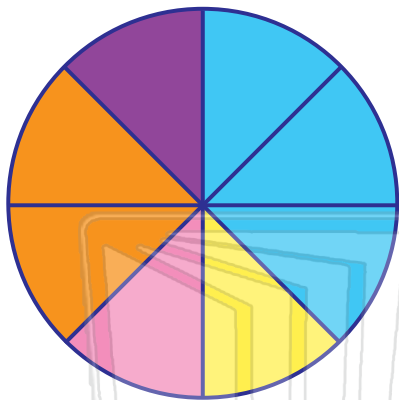
1/8

How much of the circle is orange? Write the answer as a percent.

25%



Name _____ Class _____ Date _____



How much of the circle is purple?
Write the answer as a fraction.

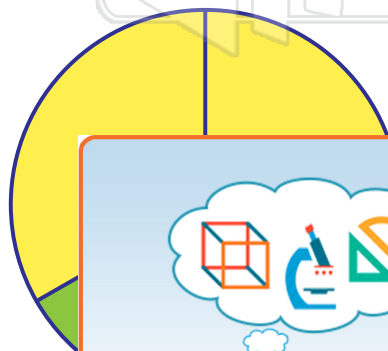
1/8

How much of the circle is blue? Write
the answer as a fraction.

3/8

How much of the circle is orange?
Write the answer as a percent.

25%



How much of the circle is yellow?
Write the answer as a fraction.

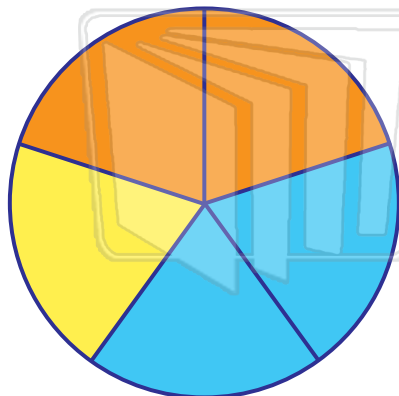
2/3



PREVIEW

Please [Sign In](#) or [Sign Up](#) to download
the printable version of this worksheet

/3



How much of the circle is blue? Write
the answer as a fraction.

2/5

How much of the circle is blue? Write
the answer as a percent.

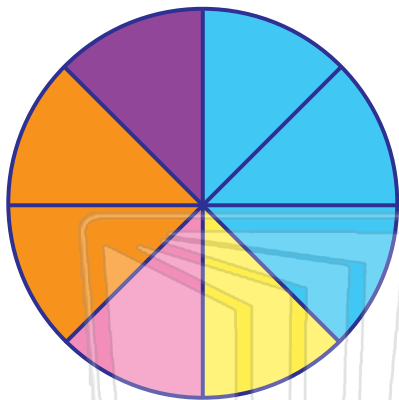
40%

How much of the circle is yellow?
Write the answer as a fraction.

1/5



Name _____ Class _____ Date _____



How much of the circle is orange?
Write the answer as a percent.

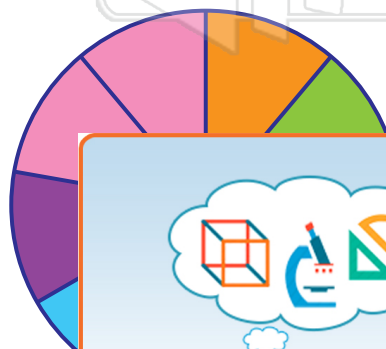
25%

How much of the circle is yellow?
Write the answer as a fraction.

1/8

How much of the circle is blue? Write
the answer as a fraction.

3/8



How much of the circle is pink? Write
the answer as a fraction.

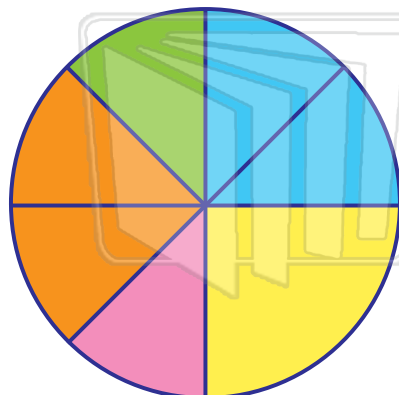
2/9



/3

PREVIEW

Please [Sign In](#) or [Sign Up](#) to download
the printable version of this worksheet



How much of the circle is yellow?
Write the answer as a percent.

25%

How much of the circle is green? Write
the answer as a fraction.

1/8

How much of the circle is orange?
Write the answer as a fraction.

2/8 or 1/4