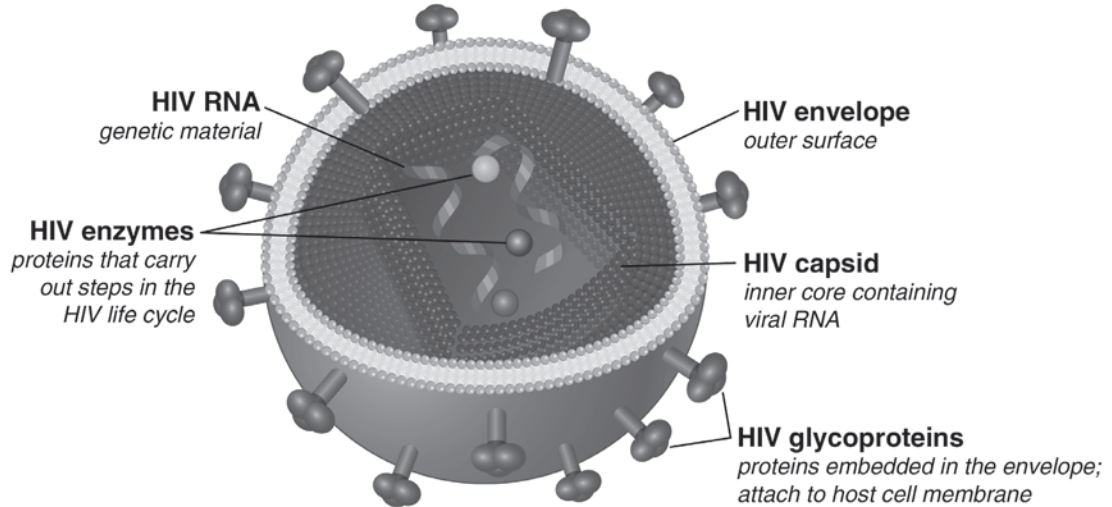




Name \_\_\_\_\_ Class \_\_\_\_\_ Date \_\_\_\_\_

## What is HIV?

**HIV** stands for **Human Immunodeficiency Virus**, which is the virus that causes HIV infection. The abbreviation “**HIV**” can refer to the virus or to the infection.



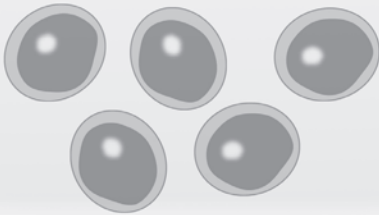
## What is AIDS?

**AIDS** stands for **Acquired Immunodeficiency Syndrome**. AIDS is the **most advanced stage** of HIV infection.

**HIV** attacks and **destroys** the infection-fighting **CD4 cells** of the immune system. The loss of CD4 cells makes it difficult for the body to fight infections and certain cancers. Without treatment, HIV can gradually destroy the **immune system** and advance to **AIDS**.

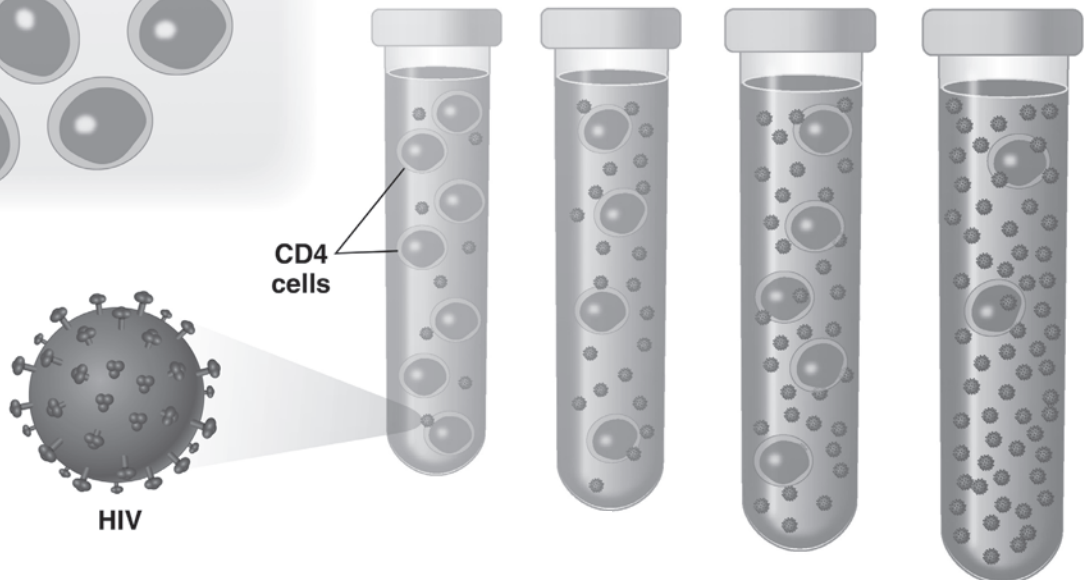
### CD4 Cells

- **CD4 cells** (specialized white blood cells) are part of the **immune system**.
- HIV attacks and kills CD4 cells.
- Loss of CD4 cells makes it hard for the body to fight off infections.



### Disease Progression

- **AIDS** is the **last stage** of HIV infection.
- As HIV infection advances to AIDS, the amount of **HIV** in the body **increases** and the number of CD4 cells decreases.
- Without anti-viral medicines, HIV advances to AIDS in about **10 years**.
- Treatment can stop the HIV infection from advancing to AIDS.



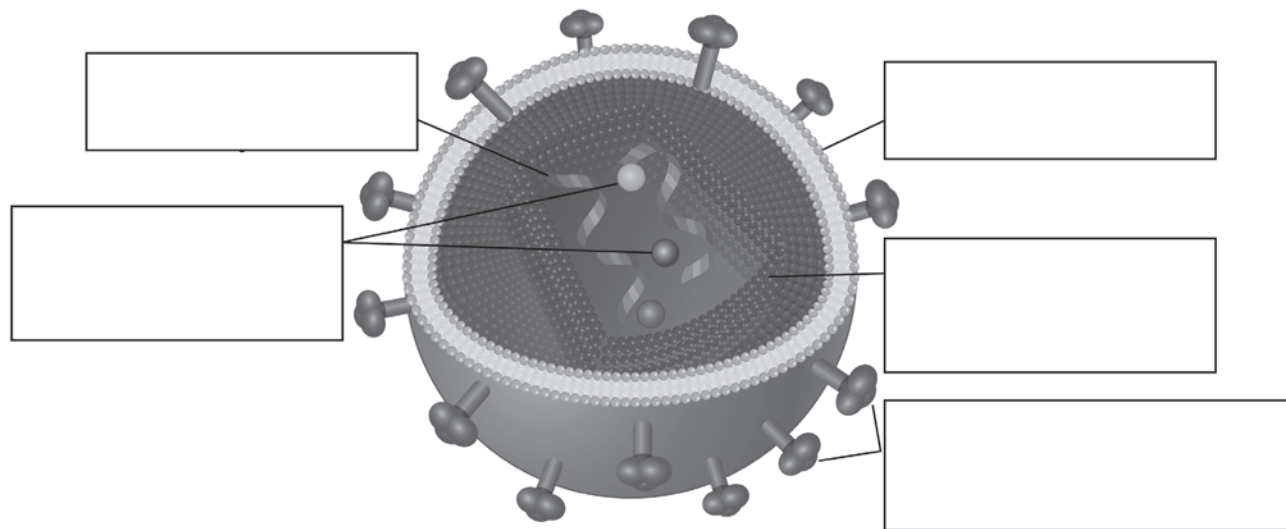


Name \_\_\_\_\_ Class \_\_\_\_\_ Date \_\_\_\_\_

## What is HIV?

---

---



## What is AIDS?

---

---

### CD4 Cells

### Disease Progression

---

---

---

---

---

---

---

---

---

---

---

---

---

---

---

---

