

ANIMALS

Kinds of Animals



The
The
Fis



PREVIEW

Please [Sign In](#) or [Sign Up](#) to download the printable version of this worksheet



- ✓ Fish live in water.
- ✓ Fish breathe through their gills.
- ✓ Fish have scales.

Birds



- ✓
- ✓
- ✓

Ma



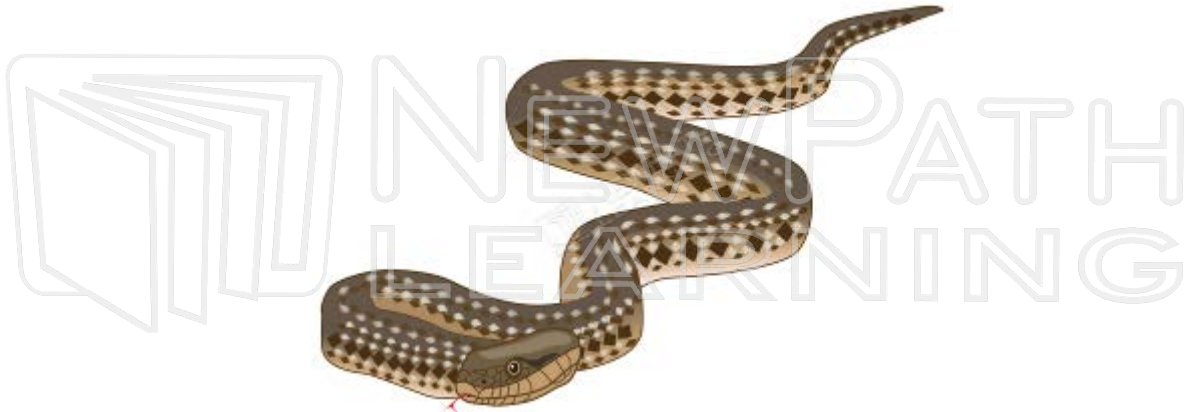
PREVIEW

Please [Sign In](#) or [Sign Up](#) to download the printable version of this worksheet



- ✓ Mammals have fur.
- ✓ Mammal mothers give babies milk from their bodies.

Reptiles



- ✓ Reptiles usually lay eggs.

✓

✓

Am



PREVIEW

Please [Sign In](#) or [Sign Up](#) to download the printable version of this worksheet



- ✓ Amphibians live part of life in water and part on land.
- ✓ When they live in water, they breathe through gills.
- ✓ When they live on land, they breathe through their lungs.

***Let's check what we have learned so far:
Name one detail about a reptile.***

How are animals different from each other?

Animals are similar in many ways, but they are also different too!

Here are some ways that animals can be different:

Where Animals LIVE:

- ✓ Some animals live on land (like a tiger), some animals live in the water (like a fish), and some animals live on land and in water (like a frog).
- ✓ Some animals live in places where it is very hot (like a camel), some animals live where it is very cold (like a polar bear), and some animals live in places where it is warm (like a squirrel).

How

✓



✓

PREVIEW

✓

Please [Sign In](#) or [Sign Up](#) to download the printable version of this worksheet



- ✓ Some animals can slither. (like a snake)
- ✓ While other animals hop. (like a kangaroo)

Animal BODY PARTS and BODY FEATURES:

- ✓ Some animals have two legs while others have four legs. Some animals (like snakes) have NO legs!
- ✓ Some animals have wings.
- ✓ Some animals have fur, some have no fur, and some (like birds) have feathers.



Animals

✓



PREVIEW

Please [Sign In](#) or [Sign Up](#) to download the printable version of this worksheet

- ✓ Some animals sleep during winter (like a bear).



How animals have BABIES:

- ✓ Some animals lay eggs.
- ✓ Some animals give birth to live babies.
- ✓ Some animals look like their parents when they are born (like a polar bear).



PREVIEW

Please [Sign In](#) or [Sign Up](#) to download the printable version of this worksheet



***Let's check what we have learned so far:
Name one way animals can be different.***

What Do Animals Need to Live?

- ✓ Animals need **water** to live.
- ✓ Animals need **food** to live:
 - * Some animals eat just plants (they are called herbivores).
 - * Some animals just eat other animals (they are called carnivores).
 - * Some animals eat plants AND other animals (they are called omnivores).

✓

✓

An illustration showing a row of diverse children standing on a green patch of grass. Above each child is a thought bubble containing various educational icons: a cube, a microscope, a protractor, a globe, a chemistry flask, a DNA helix, a pie chart, a bar graph, and mathematical symbols like a plus sign, minus sign, multiplication sign, and equals sign. One bubble also contains the letters "ABC".

PREVIEW

Please [Sign In](#) or [Sign Up](#) to download the printable version of this worksheet