

## MAIN PARTS OF PLANTS

### Parts of Plants

A plant has many important parts, such as its **roots, stem, leaves, and flower.**



Ro

Each  
plan

- R
- R
- P
- S
- R



### PREVIEW

Please [Sign In](#) or [Sign Up](#) to download the printable version of this worksheet

und.  
a  
ne



**Lesson Checkpoint:**  
**What is one job of the *ROOTS* of a plant?**

## Stem

Let's now look at a plant's stem.

- A plant's **stem** is used to support the plant. The stem allows the plant's leaves to reach above the soil so that they may take in the sunshine.
- A plant needs sunshine to grow, make food, and live. A plant's stem carries the water and nutrients that is taken in by the plant's roots to the rest of the plant.



## Lea

Time  
imp

- C  
a  
v
- Leaves contain **chlorophyll**, which is the green substance that gives the plant its green color and that helps the plant make its own food.

## PREVIEW

Please [Sign In](#) or [Sign Up](#) to download the printable version of this worksheet

od  
nd



## Lesson Checkpoint:

**What is one job of the LEAVES of a plant?**

## Photosynthesis

Plant leaves are the part of a green plant where the plant's own food is made. The plant makes food through a process called **photosynthesis**. In photosynthesis, a green plant uses energy from the sun, water it gets from the soil, and the air to make its food.

During the process of photosynthesis, the leaves of a green plant take in **carbon dioxide**, which is what the plant needs to make its own food. Humans and other animals breathe out carbon dioxide, which a plant then takes in through its leaves. **Photosynthesis** creates food for the plant and at the same time releases **oxygen** into the air.

### Lesson Checkpoint: What do plants take in during photosynthesis?

**Flo**  
Now  
mai  
from

**Par**  
The  
whic  
of th

**Sep**  
prot



## PREVIEW


Please [Sign In](#) or [Sign Up](#) to download the printable version of this worksheet

The **petals** of a flower, which are often colorful and scented, attract insects to the flower.



The **stamen** of a flower is made up of two main parts: the **anther** and the **filament**.

The **filament** is the extremely thin structure that holds up the anther.



**pollen**

**1** insect picks up pollen from anthers

**2** pollen transferred to stigma

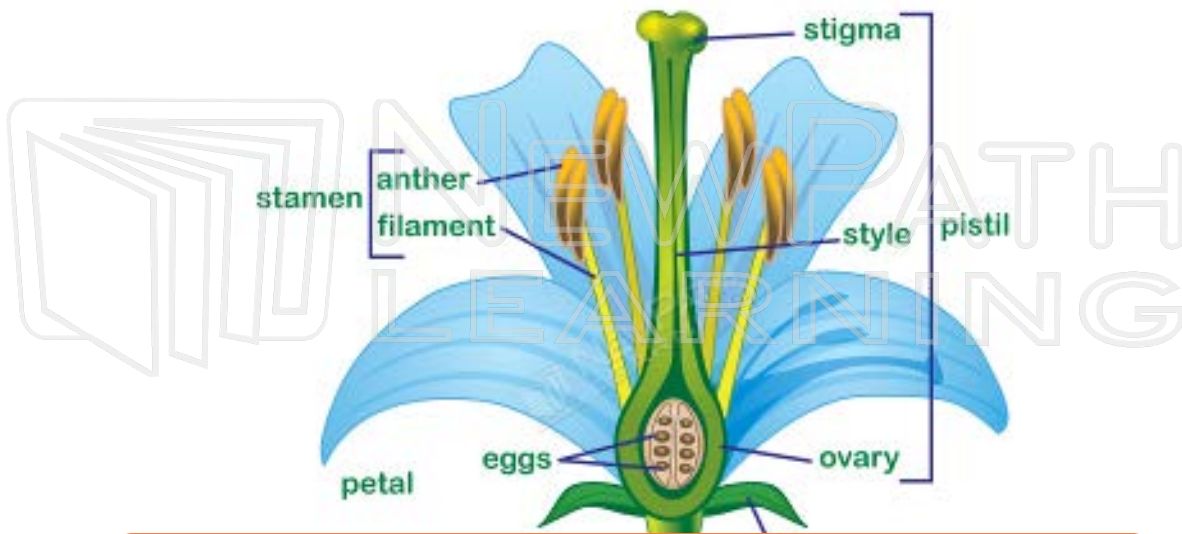
pollen tubes down ovary

**PREVIEW**

Please [Sign In](#) or [Sign Up](#) to download the printable version of this worksheet

The **anther** contains pollen that collects on bees and butterflies that land on the flower that then transfer the pollen to other flowers, which is a necessary part of plant reproduction. Pollen is the fine yellow, powder like substance found on the anthers of a flower. Pollen is needed in order for flowers to reproduce.





The  
styl  
The  
colle  
The  
flow

## PREVIEW

Please [Sign In](#) or [Sign Up](#) to download the printable version of this worksheet

The **ovary** of a flower contains seeds and turns into fruit.

**Lesson Checkpoint:**  
*Which part of the flower contains the pollen?*