



Name \_\_\_\_\_ Class \_\_\_\_\_ Date \_\_\_\_\_

### Match each of the following terms to its definition:

Negative feedback

Lens

Homeostasis

Iris

Motor neuron

Interneuron

Hormones

Endocrine glands

1. \_\_\_\_\_ - glands found throughout the human body that act to control body functions by releasing hormones into the bloodstream

2. \_\_\_\_\_ - the tendency of a body system to maintain a stable, internal balance while faced with changes

3. \_\_\_\_\_ wide variation in growth and development

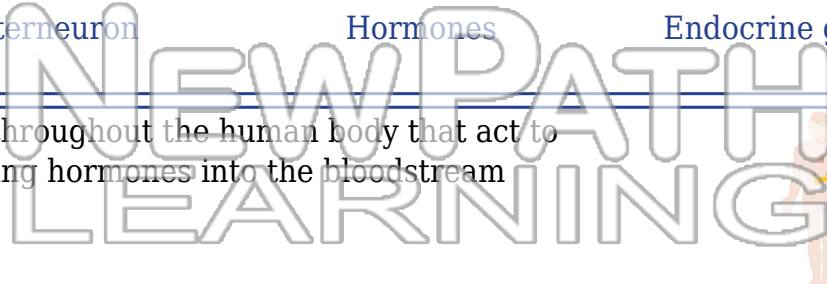
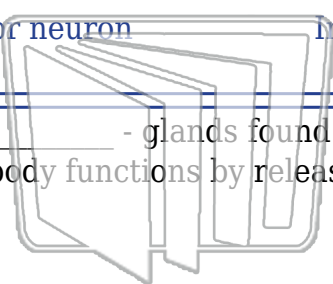
4. \_\_\_\_\_ spinal cord

5. \_\_\_\_\_ that enter the brain

6. \_\_\_\_\_ - a flexible structure of the eye that focuses light; also a piece of glass used to focus an image

7. \_\_\_\_\_ - a neuron that receives a nerve impulse from another neuron and sends the message to a muscle, causing it to contract; nerve cells that carry impulses away from the brain and spinal cord to the body

8. \_\_\_\_\_ - a system that will turn off a particular hormone within the blood once it reaches a certain level



3. \_\_\_\_\_ wide variation in growth and development

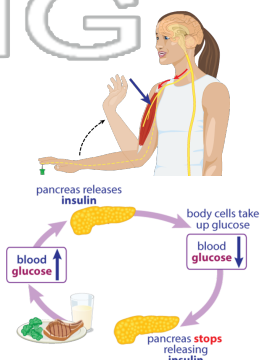
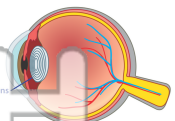
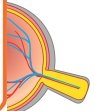
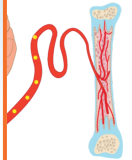
4. \_\_\_\_\_ spinal cord

5. \_\_\_\_\_ that enter the brain



**PREVIEW**

Please [Sign In](#) or [Sign Up](#) to download the printable version of this worksheet





Name \_\_\_\_\_ Class \_\_\_\_\_ Date \_\_\_\_\_

**Match each of the following terms to its definition:**

Negative feedback

Lens

Homeostasis

Iris

Motor neuron

Interneuron

Hormones

Endocrine glands

**1. endocrine glands** - glands found throughout the human body that act to control body functions by releasing hormones into the bloodstream

**2. homeostasis** - the tendency of a body system to maintain a stable, internal balance while faced with changes

**3. hormone** - a chemical messenger that carries information between different parts of the body; a variety of hormones control growth and development

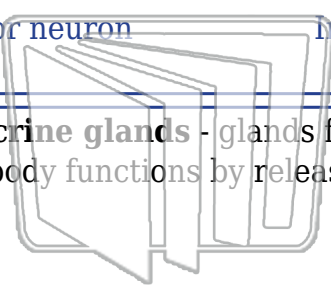
**4. interneuron** - a neuron that connects other neurons in the spinal cord and brain

**5. iris** - the colored part of the eye that controls the amount of light entering the eye

**6. lens** - a flexible structure of the eye that focuses light; also a piece of glass used to focus an image

**7. motor neuron** - a neuron that receives a nerve impulse from another neuron and sends the message to a muscle, causing it to contract; nerve cells that carry impulses away from the brain and spinal cord to the body

**8. negative feedback** - a system that will turn off a particular hormone within the blood once it reaches a certain level



NEW PATH  
LEARNING

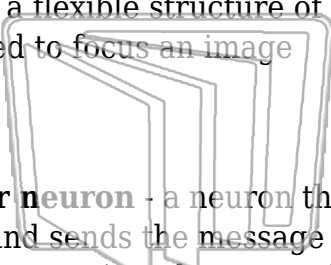
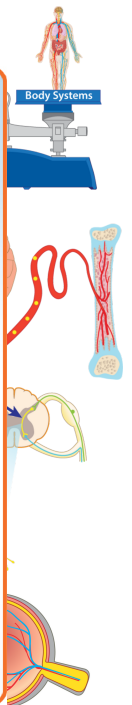


Environmental Learning

Body Systems

**PREVIEW**

Please [Sign In](#) or [Sign Up](#) to download the printable version of this worksheet



NEW PATH  
LEARNING

