



Name \_\_\_\_\_ Class \_\_\_\_\_ Date \_\_\_\_\_

- 1 Which **two processes** are involved in **mitotic cell division**?
- A nuclear duplication and cytoplasmic division
  - B nuclear duplication and cytoplasmic duplication
  - C spermatogenesis and cytoplasmic duplication
  - D oogenesis and cytoplasmic division

- 2 Which diagram best shows the process of **binary fission in an amoeba**?
- A
- B
- C
- D

- 3 Which **processes** occur in regions **1** and **2** in these cells?
- 
- A synthesis of a cell plate at 1, pinching in of the cell membrane at 2
  - B pinching in of the cell membrane at 1,

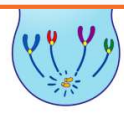
- 4 The ability of cells to **pass on their characteristics** to new cells is most directly related to the ability of
- A cytoplasm to excrete wastes
  - B effectors to respond to



## PREVIEW

7 Please [Sign In](#) or [Sign Up](#) to download the printable version of this worksheet

- B centrioles
- C cell plate
- D endoplasmic reticulum



- B nuclei disappear
- C centrioles migrate
- D chromosome pairs separate from each other

- 9 Which statement is true of **both mitosis** and **meiosis**?
- A Both are involved in asexual reproduction.
  - B Both occur only in reproductive cells.
  - C The number of chromosomes is reduced by half.
  - D DNA replication occurs before the division of the nucleus.

- 10 Which phrase best describes a **process represented** in the diagram below?
- 
- A a zygote dividing by mitosis
  - B a zygote dividing by meiosis
  - C a gamete dividing by mitosis
  - D a gamete dividing by meiosis

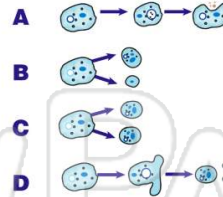


Name \_\_\_\_\_ Class \_\_\_\_\_ Date \_\_\_\_\_

- 1 Which **two processes** are involved in **mitotic cell division**?
- A nuclear duplication and cytoplasmic division
  - B nuclear duplication and cytoplasmic duplication
  - C spermatogenesis and cytoplasmic duplication
  - D oogenesis and cytoplasmic division

(A)

- 2 Which diagram best shows the process of **binary fission in an amoeba**?



(C)

- 3 Which **processes** occur in regions **1** and **2** in these cells?
- 
- A synthesis of a cell plate at 1, pinching in of the cell membrane at 2
  - B pinching in of the cell membrane at 1,

(A)

- 4 The ability of cells to **pass on their characteristics** to new cells is most directly related to the ability of

- A cytoplasm to excrete wastes
- B effectors to respond to

(D)

5



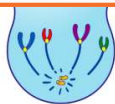
(C)

## PREVIEW

Please [Sign In](#) or [Sign Up](#) to download the printable version of this worksheet

7

- B centrioles
- C cell plate
- D endoplasmic reticulum



- B nucleus disappear
- C centrioles migrate
- D chromosome pairs separate from each other

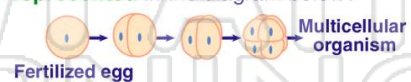
(C)

- 9 Which statement is true of **both mitosis** and **meiosis**?

- A Both are involved in asexual reproduction.
- B Both occur only in reproductive cells.
- C The number of chromosomes is reduced by half.
- D DNA replication occurs before the division of the nucleus.

(D)

- 10 Which phrase best describes a **process represented** in the diagram below?



- A a zygote dividing by mitosis
- B a zygote dividing by meiosis
- C a gamete dividing by mitosis
- D a gamete dividing by meiosis

(A)