



Name _____ Class _____ Date _____

1 Which **human disorder** is characterized by a group of abnormal body cells that **suddenly begin to undergo cell division** at a very rapid rate?

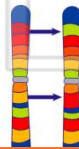
- A albinism
- B cancer
- C hemophilia
- D color blindness

2 Which process normally occurs during **meiosis**, but **not** during **mitosis**?

- A chromosomal replication
- B synapsis of chromosomes
- C spindle formation
- D centromere replication

3 Which statement best describes a **chromosomal alteration**?

- A It never affects the phenotype of an organism.
- B It may affect the phenotype of



4 A **DNA nucleotide** is composed of

- A carbon, hydrogen, oxygen, nitrogen, and phosphorus
- B carbon, hydrogen, nitrogen, sulfur, and calcium



5



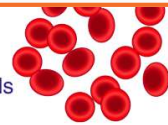
PREVIEW

Please [Sign In](#) or [Sign Up](#) to download the printable version of this worksheet

7

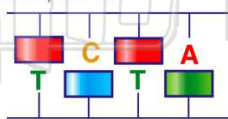
- A a gamete reproducing sexually
- B a white blood cell engulfing bacteria
- C a zygote being produced in an ovary
- D an animal repairing damaged tissue

- B release hormones to the blood
- C pass through artery walls
- D carry out cell division



9 The diagram below represents an incomplete section of a **DNA molecule**. The boxes represent **unidentified bases**. When the boxes are filled in, the **total number of bases** represented by the **letter A** (both inside and outside the boxes) will be

- A 1
- B 2
- C 3
- D 4



10 **Hereditary information** is stored inside the

- A ribosomes, which have chromosomes that contain many genes
- B ribosomes, which have genes that contain many chromosomes
- C nucleus, which has chromosomes that contain many genes
- D nucleus, which has genes that contain many chromosomes



Name _____ Class _____ Date _____

1 Which **human disorder** is characterized by a group of abnormal body cells that **suddenly begin to undergo cell division** at a very rapid rate?

A albinism
 B cancer
 C hemophilia
 D color blindness

2 Which process normally occurs during **meiosis**, but **not** during **mitosis**?

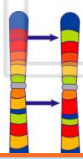
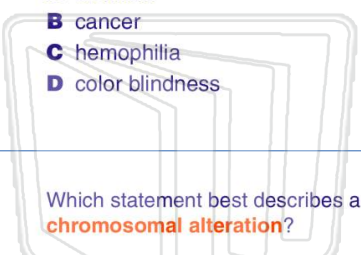
A chromosomal replication
 B synapsis of chromosomes
 C spindle formation
 D centromere replication

3 Which statement best describes a **chromosomal alteration**?

A It never affects the phenotype of an organism.
 B It may affect the phenotype of

4 A **DNA nucleotide** is composed of

A carbon, hydrogen, oxygen, nitrogen, and phosphorus
 B carbon, hydrogen, nitrogen, sulfur, and calcium



PREVIEW

7 Please [Sign In](#) or [Sign Up](#) to download the printable version of this worksheet

8

A a gamete reproducing sexually
 B a white blood cell engulfing bacteria
 C a zygote being produced in an ovary
 D an animal repairing damaged tissue

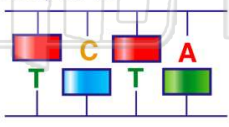
9

B release hormones to the blood
 C pass through artery walls
 D carry out cell division



9 The diagram below represents an incomplete section of a **DNA molecule**. The boxes represent **unidentified bases**. When the boxes are filled in, the **total number of bases** represented by the **letter A** (both inside and outside the boxes) will be

A 1
 B 2
 C 3
 D 4



10 **Hereditary information** is stored inside the

A ribosomes, which have chromosomes that contain many genes
 B ribosomes, which have genes that contain many chromosomes
 C nucleus, which has chromosomes that contain many genes
 D nucleus, which has genes that contain many chromosomes