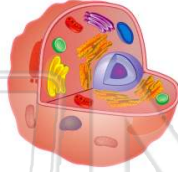




Name \_\_\_\_\_ Class \_\_\_\_\_ Date \_\_\_\_\_

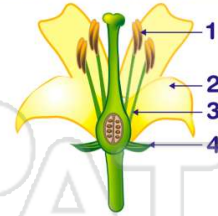
1 Compared to the number of **chromosomes** contained in a body cell of a parent, how many **chromosomes** would normally be contained in a **gamete**?

- A the same number
- B twice as many
- C one-fourth as many
- D half as many

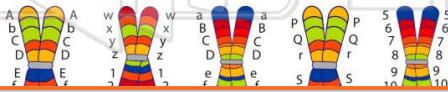


2 The diagram below shows parts of a flower. In which structure does **meiosis** occur?

- A 1
- B 2
- C 3
- D 4



3 Which **chromosomes** shown below are **homologous**?



4 Which diagram correctly illustrates the fusion of **normal gametes** that will most likely produce a **human male**?



## PREVIEW

Please [Sign In](#) or [Sign Up](#) to download the printable version of this worksheet

7

A stable gene frequencies  
 B chromosomal mutations  
 C slow environmental changes  
 D asexual reproduction

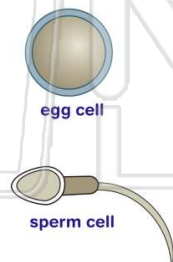


- B hemophilia
- C Tay-Sachs
- D phenylketonuria



9 The diagram represents **two human cells**. These cells are a **direct result of**

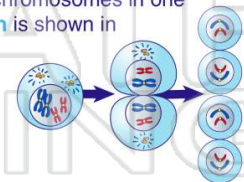
- A mitotic cell division
- B sex linkage
- C fertilization
- D gametogenesis



10 The distribution of chromosomes in one type of **cell division** is shown in the diagram.

Which process is represented in the diagram?

- A asexual reproduction
- B meiosis
- C mitosis
- D vegetative propagation

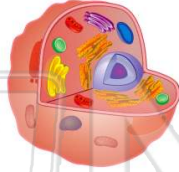




Name \_\_\_\_\_ Class \_\_\_\_\_ Date \_\_\_\_\_

1 Compared to the number of **chromosomes** contained in a body cell of a parent, how many **chromosomes** would normally be contained in a **gamete**?

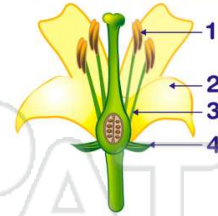
- A the same number
- B twice as many
- C one-fourth as many
- D half as many



D

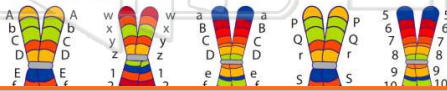
2 The diagram below shows parts of a flower. In which structure does **meiosis** occur?

- A 1
- B 2
- C 3
- D 4



A

3 Which **chromosomes** shown below are **homologous**?



C

4 Which diagram correctly illustrates the fusion of **normal gametes** that will most likely produce a **human male**?



D



## PREVIEW

Please [Sign In](#) or [Sign Up](#) to download the printable version of this worksheet

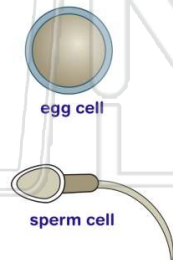
7 A stable gene frequencies  
B chromosomal mutations  
C slow environmental changes  
D asexual reproduction



- B hemophilia
- C Tay-Sachs
- D phenylketonuria

9 The diagram represents **two human cells**. These cells are a **direct result of**

- A mitotic cell division
- B sex linkage
- C fertilization
- D gametogenesis

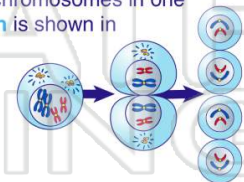


D

10 The distribution of chromosomes in one type of **cell division** is shown in the diagram.

Which process is represented in the diagram?

- A asexual reproduction
- B meiosis
- C mitosis
- D vegetative propagation



B