



Name _____ Class _____ Date _____

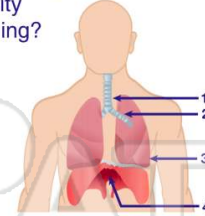
1 Which function of **human blood** includes the other three?

- A transporting nutrients
- B transporting oxygen
- C collecting wastes
- D maintaining homeostasis



2 Which **structure** shown in the diagram below **contracts**, causing a **pressure change** in the chest cavity during breathing?

- A 1
- B 2
- C 3
- D 4



3 To determine **heart rate**, a student should count the pulsations per minute in

- A a vein
- B a capillary



4 What is the main function of a **nephron**?

- A It breaks down red blood cells to form nitrogenous wastes.
- B It regulates the chemical composition of the blood.

5



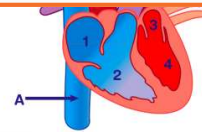
PREVIEW

Please [Sign In](#) or [Sign Up](#) to download the printable version of this worksheet

7

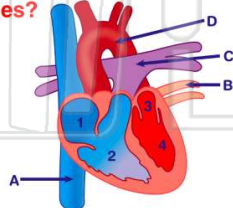
- C skeletal muscle and bones
- D cardiac muscle and immovable joints

- C C
- D D



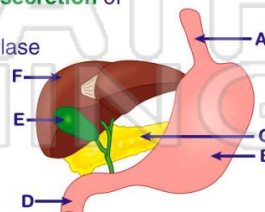
9 Which heart chamber pumps blood **toward the alveoli** by way of the **pulmonary arteries**?

- A 1
- B 2
- C 3
- D 4



10 A digestive function of **organ C** is the **synthesis** and **secretion** of

- A salivary amylase
- B protease
- C hydrochloric acid
- D bile






Name _____ Class _____ Date _____

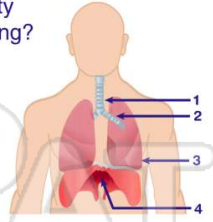
1 Which function of **human blood** includes the other three?

- A transporting nutrients
- B transporting oxygen
- C collecting wastes
- D maintaining homeostasis



D

2 Which **structure** shown in the diagram below **contracts**, causing a **pressure change** in the chest cavity during breathing?




- A 1
- B 2
- C 3
- D 4

D

3 To determine **heart rate**, a student should count the pulsations per minute in

- A a vein
- B a capillary



C

4 What is the main function of a **nephron**?

- A It breaks down red blood cells to form nitrogenous wastes.
- B It regulates the chemical composition of the blood.

B

5



PREVIEW

Please [Sign In](#) or [Sign Up](#) to download the printable version of this worksheet

C

7

- C skeletal muscle and bones
- D cardiac muscle and immovable joints

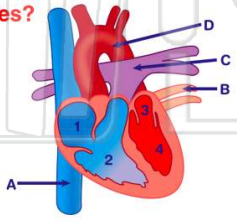
8

- C C
- D D



A

9 Which heart chamber pumps blood **toward the alveoli** by way of the **pulmonary arteries**?

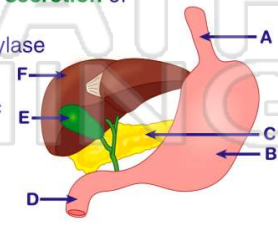


- A 1
- B 2
- C 3
- D 4

B

10 A digestive function of **organ C** is the **synthesis** and **secretion** of

- A salivary amylase
- B protease
- C hydrochloric acid
- D bile



B