



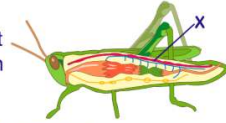
Name _____ Class _____ Date _____

1 An organism with **chitinous appendages** and **Malpighian tubules** most likely eliminates carbon dioxide through

- A spiracles
- B nephridia
- C antennae
- D tentacles

2 A diagram of a **grasshopper dissection** is shown below.

Which statement best describes the location of **structure X**?



- A It is ventral to the nerve cord.
- B It is dorsal to the digestive tract.
- C It is anterior to the crop.
- D It is posterior to the anus.

3 To observe the **aortic arches** of an earthworm, a student should use



- A an ultracentrifuge

4 The **absorption** and **circulation** of materials in a hydra are most **similar** to the absorption and circulation of materials in a



- A grasshopper

5



PREVIEW

Please [Sign In](#) or [Sign Up](#) to download the printable version of this worksheet

7

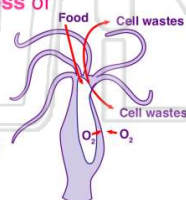


- C one monoploid cell, only
- D four monoploid cells



9 The **movement of gases** indicated by the **arrows** in the diagram below of a hydra, takes place by the **process of**

- A pinocytosis
- B diffusion
- C active transport
- D dehydration synthesis



10 In certain invertebrates, the function of **Malpighian tubules** and **nephridia** is to

- A collect waste materials
- B carry oxygen
- C transmit nerve impulses
- D synthesize proteins



Name _____ Class _____ Date _____

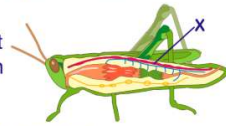
1 An organism with **chitinous appendages** and **Malpighian tubules** most likely eliminates carbon dioxide through

- A spiracles
- B nephridia
- C antennae
- D tentacles

(A)

2 A diagram of a **grasshopper dissection** is shown below.

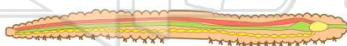
Which statement best describes the location of **structure X**?



- A It is ventral to the nerve cord.
- B It is dorsal to the digestive tract.
- C It is anterior to the crop.
- D It is posterior to the anus.

(B)

3 To observe the **aortic arches** of an earthworm, a student should use



- A an ultracentrifuge

(B)

4 The **absorption** and **circulation** of materials in a hydra are most **similar** to the absorption and circulation of materials in a



- A grasshopper

(B)

5



(D)

PREVIEW

Please [Sign In](#) or [Sign Up](#) to download the printable version of this worksheet

7



- C one monoploid cell, only
- D four monoploid cells

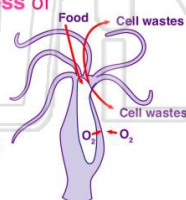


(D)

9

The **movement of gases** indicated by the **arrows** in the diagram below of a hydra, takes place by the **process of**

- A pinocytosis
- B diffusion
- C active transport
- D dehydration synthesis



(B)

10

In certain invertebrates, the function of **Malpighian tubules** and **nephridia** is to

- A collect waste materials
- B carry oxygen
- C transmit nerve impulses
- D synthesize proteins

(A)